

Features

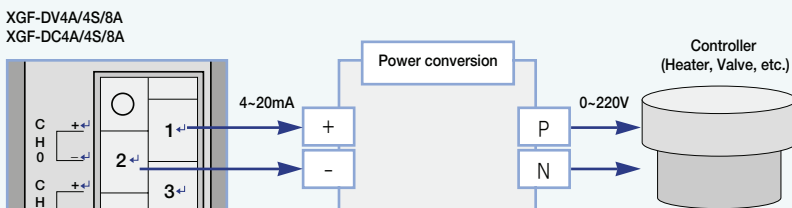
- Fast conversion processing
- High resolution
- Setting and monitoring the special module parameter through XG5000
- Supporting 4 types of digital input data format



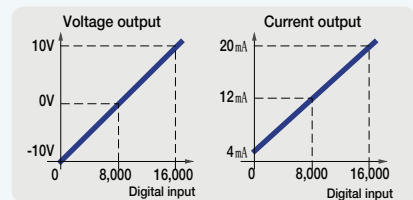
Specifications

Item	XGF-DV4A,XGF-DV8A, XGF-DV4S (Voltage output type)			XGF-DC4A,XGF-DC8A, XGF-DC4S (Current output type)				
No. of output channel	XGF-DV4A/4S, XGF-DC4A/4S : 4 channels / XGF-DV8A, XGF-DC8A : 8 channels							
Analog output range	DC 1~5V, 0~5V			DC 4~20mA				
	DC 0~10V, -10~10V			DC 0~20mA				
	Selection of input range in the program or S/W package (Available to set per each channel)							
Digital input range	Analog output	Voltage type		1~5V	0~5V	0~10V	-10~10V	
		Digital input	Unsigned value		0~16,000			
			Signed value		-8,000~8,000			
			Precise value		1,000~5,000	0~5,000	0~10,000	-10,000~10,000
			Percentile value		0~10,000			
	Analog output	Current type		4~20mA		0~20mA		
		Digital input	Unsigned value		0~16,000			
			Signed value		-8,000~8,000			
			Precise value		4,000~20,000		0~20,000	
			Percentile value		0~10,000			
16-bit binary value: selection of input type by program or parameter (Available to be set per each channel)								
Max. resolution	1/16,000 (Per each input range)							
	1~5V	0.250mV	4~20mA		1.0μA			
	0~5V	0.3125mV						
	0~10V	0.625mV	0~20mA		1.25μA			
Accuracy	XGF-DV4A/8A, DC4A/8A : ±0.2% or less (Ambient temperature 25°C), ±0.3% or less (Range of operation temperature)							
	XGF-DV4S/DC4S : ±0.1% or less (Ambient temperature 25°C), temp coefficient: ±80ppm/°C							
Conversion speed	250μs/channel							
Max. absolute output	±15V			±24mA				
Insulation method	Photo-coupler insulation between terminal and power supply							
	XGF-DV4A/8A, XGF-DC4A/8A: No insulation between channels							
	XGF-DV4S, XGF-DC4S (Insulation type): Insulation between channels							
Connection terminal	18 point terminal							
No. of occupied points	Fixed type (Setting in basic parameter): assign 64 points							
	Variable type (Dissolving in basic parameter): assign 16 points							
Current consumption (mA)		DV4A	DV8A	DV4S	DC4A	DC8A	DC4S	
	Internal	190	190	200	190	190	200	
External	140	180	150	210	300	220		
Weight (Kg)	0.15							

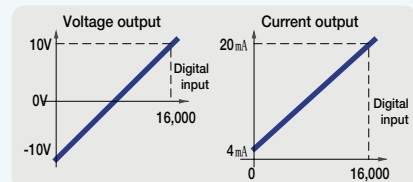
Output wiring



I/O conversion characteristics



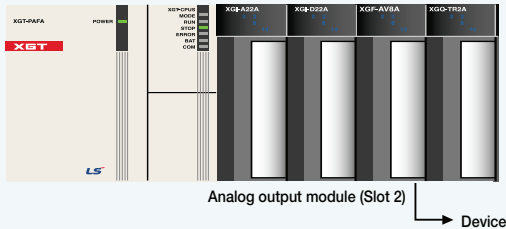
Insulation type



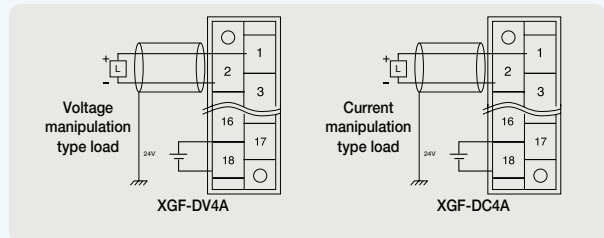
Special module / Analog output module (Example)

This is a simple example to start Analog output module setting. For more details, refer to user's manual.

System configuration

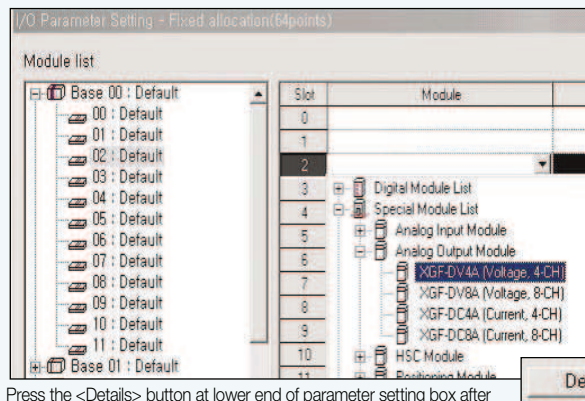


Wiring



Parameter setting

In the parameter setting box, select slot and analog module that you want to use. (This example shows to select '0' channel of voltage output type.)



Press the <Details> button at lower end of parameter setting box after selecting the module.

XGF-DV4A (Voltage, 4-CH)	
Parameter	CH 0
<input type="checkbox"/> Channels	Enable
<input type="checkbox"/> Channels	0~10V
<input type="checkbox"/> Input Type	0~16000
<input type="checkbox"/> CH Output Type	Min

You need to fill out each item suitable for your system.

Programming

Create a program for D/A conversion (0~16000 to 0~10V).

Special devices for programming

Refer to user's manual for more details.

U02.02.0: Admitting Channel 0 output

U02.03: Output data of channel 0

Uxy.aa.bb
 x: Base number
 y: Slot number
 aa,bb: Refer to user's manual.

