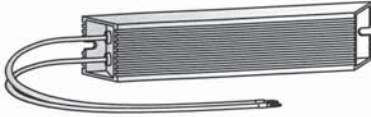


External Brake Resistors FR-ABR-(H)□□k for FR-D700/E700 and FR-A700



Among the capacity range of the FR-D720S-025-100/FR-D740 (all) and FR-E740 (all) or FR-A700-00023-00620 the inverter is equipped with an internal brake chopper as standard.

An improvement of the brake duty is achieved by the use of an external brake resistor with a higher rated capacity.

The duty cycle is selectable via parameter 30 and can be specified, according to the inverter, up to 10 % respectively 30 % via parameter 70.

Brake resistor	Frequency inverter	Regenerative brake duty	Resistor [Ω]	Art. no.
FR-ABR-0.4 k	FR-D720S-025	10 % (ED)	200	46788
FR-ABR-0.75 k	FR-D720S-042	10 % (ED)	100	46602
FR-ABR-2.2 k	FR-D720S-070/100	10 % (ED)	60	46787
FR-ABR-H 0.4 k	FR-D740-012 FR-E740-016 FR-A740-00023	10 % (ED)	1200	46601
FR-ABR-H 0.75 k	FR-D740-022 FR-E740-026 FR-A740-00038	10 % (ED)	700	46411
FR-ABR-H 1.5 k	FR-D740-036 FR-E740-040 FR-A740-00052	10 % (ED)	350	46603
FR-ABR-H 2.2 k	FR-D740-050 FR-E740-060 FR-A740-00083	10 % (ED)	250	46412
FR-ABR-H 3.7 k	FR-D740-080 FR-E740-095 FR-A740-00126	10 % (ED)	150	46413
FR-ABR-H 5.5 k	FR-D740-120 FR-E740-120 FR-A740-00170	10 % (ED)	110	50045
FR-ABR-H 7.5 k	FR-D740-160 FR-E740-170 FR-A740-00250	10 % (ED)	75	50049
FR-ABR-H 11 k	FR-E740-230 FR-A740-00310	6 % (ED)	52	191577
FR-ABR-H 15 k	FR-E740-300 FR-A740-00380	6 % (ED)	2 × 18 serial	191578
FR-ABR-H 22 k	FR-A740-00470-00620	6 % (ED)	2 × 52 parallel	191579

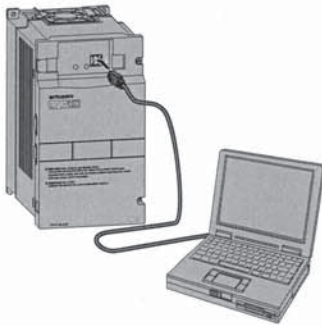
Software FR-Configurator

The Setup Software FR-Configurator is a powerful tool for the operation of your frequency inverter.

The software runs under all versions of MS Windows and therefore allows the inverter operation via any conventional personal computer. Several frequency inverters can be set up, operated, and monitored simultaneously across a network or via a personal computer or laptop.

The Software FR-Configurator is designed for all frequency inverters of the 700-series.

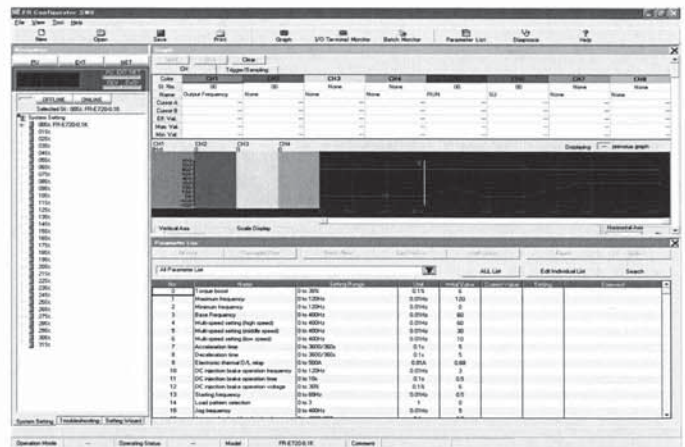
The connection between personal computer and inverter is established either via an RS485 network or directly via an SC-FR PC adapter cable available separately. For the FR-E700/FR-A700 series a USB-connector is also available.



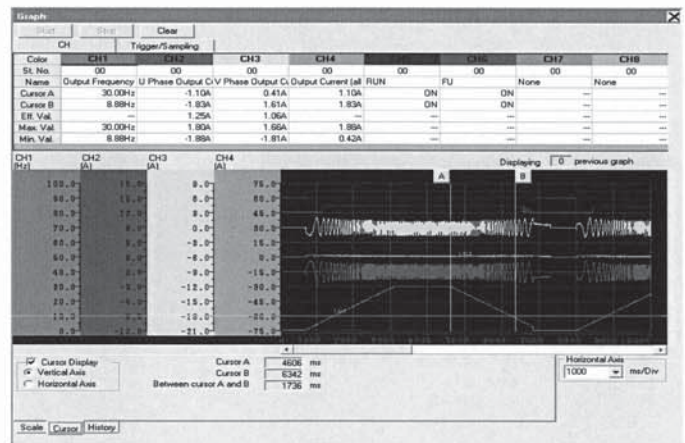
Benefits

- **System settings**
Due to the network capabilities of the inverter up to 32 frequency inverters can be operated simultaneously.
- **Parameter settings**
By means of overall and function related overviews different parameters can be adjusted easily.
- **Display functions**
The comprehensible display functions enable data, analog, oscillograph, and alarm displays.
- **Diagnostics**
The analysis of the inverter status provides a thorough error correction.
- **Test operation**
The test operation provides a simulation of the operation and adjustment via the auto-tuning function.
- **File management**
Parameters can be saved on the personal computer and printed out.
- **Help**
The extensive online help provides support concerning all questions regarding settings and operation.

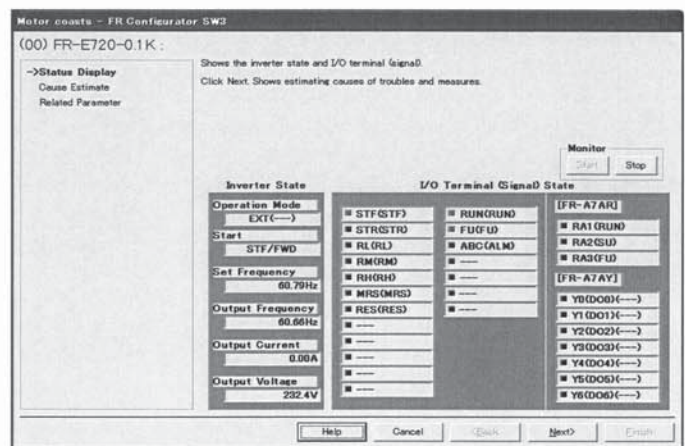
Parameter setting



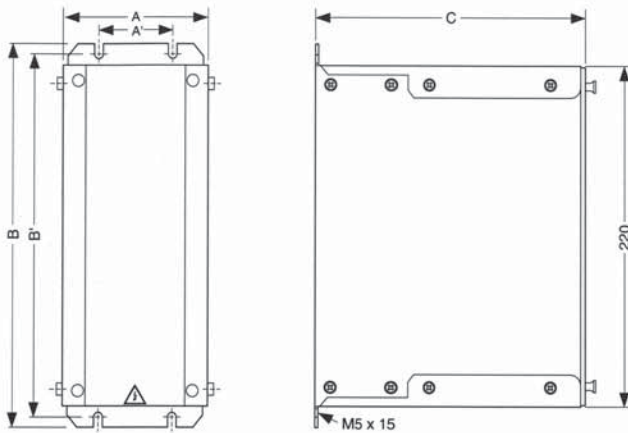
Display and monitor



Test operation



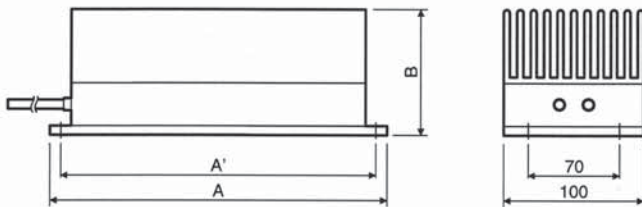
■ Brake Units BU-UFS



Brake unit	A	A'	B	B'	C	Weight [kg]
BU-UFS22J	100	50	250	240	175	2.4
BU-UFS22	100	50	250	240	175	2.5
BU-UFS40	100	50	250	240	175	2.5
BU-UFS110	107	50	250	240	195	3.9

All dimensions in mm

■ External Brake Resistor RUFC

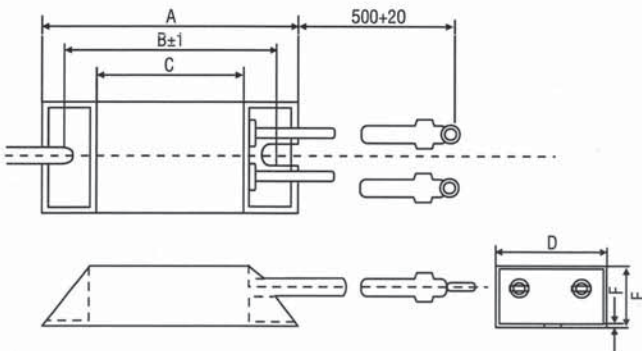


Brake resistor	A	A'	B	Weight [kg]
RUFC22	310	295	75	4.7
RUFC40	365	350	75	9.4
RUFC110	365	350	75	18.8

Remark: RUFC40 contains a set of two brake resistors, and RUFC110 contains a set of four brake resistors as shown on the left.

All dimensions in mm

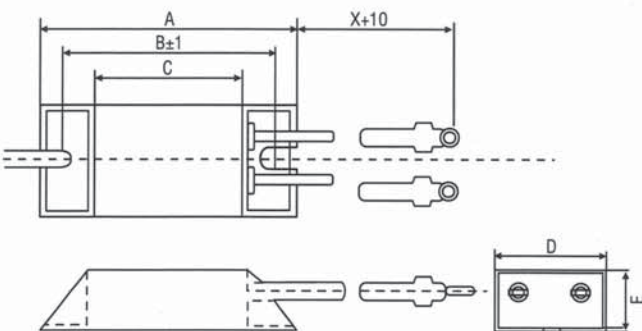
■ External Brake Resistors FR-ABR-□□k



Brake resistor	A	B	C	D	E	F	Weight [kg]
FR-ABR-0.4 k	115	100	75	40	20	2.5	0.2
FR-ABR-0.75 k	140	125	100	40	20	2.5	0.2
FR-ABR-1.5 k	215	200	175	40	20	2.5	0.4
FR-ABR-2.2 k	240	225	200	50	25	2.0	0.5

All dimensions in mm

■ External Brake Resistors FR-ABR-H□□k



Brake resistor	A	B	C	D	E	X	Weight [kg]
FR-ABR-H0.4 k	115	100	75	40	20	500	0.2
FR-ABR-H0.75 k	140	125	100	40	20	500	0.2
FR-ABR-H1.5 k	215	200	175	40	20	500	0.4
FR-ABR-H2.2 k	240	225	200	50	25	500	0.5
FR-ABR-H3.7 k	215	200	175	60	30	500	0.8
FR-ABR-H5.5 k	335	320	295	60	30	500	1.3
FR-ABR-H7.5 k	400	385	360	80	40	500	2.2
FR-ABR-H 11 k	400	—	—	100	50	700	3.2
FR-ABR-H 15 k	300	—	—	100	50	700	2.4 (x2) serial
FR-ABR-H 22 k	400	—	—	100	50	700	3.3 (x2) parallel

All dimensions in mm