

**EXPLOSION PROOF  
ELECTRICAL PARTS**

COIL GROUP

**11.0**

**FLAME PROOF  
ELECTRICAL PARTS  
"db"**



**ZONE 1/21**

**483270 & 483270.02 - ELECTRICAL PARTS 50 mm**

These coils can be mounted with every Parker ATEX solenoid valves corresponding to the specified Coil Group. See column "Coil Group" within valve pages.

**Application:** Control of solenoid valves in dangerous areas where explosion-proof protection Ex db IIC T4 to T6 is required.

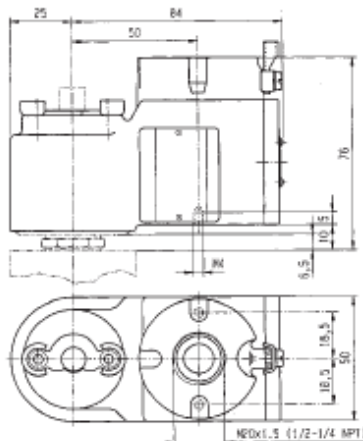
**Benefits:** Rotatable 360°, housing made of cast iron with internal connection chamber. Cover made of aluminium alloy fixed with 4 screws. The electromagnetic control pilot is composed of three main elements: housing, coil and plunger tube including housing plate.

Small size for ease of mounting in confined space.



Reference	483270 (M20 x 1.5) 483270.02 (1/2 NPT)			
Certificate	LCIE 02 ATEX 6008 X			
Coil group	11.0			
Type of protection	Gas	II 2 G - Ex db IIC T4	II 2 G - Ex db IIC T5	II 2 G - Ex db IIC T6
	Dust	II 2 D - Ex tb III C - T130°C	II 2 D - Ex tb III C - T 95°C	II 2 D - Ex tb III C - T 80°C
Degree of protection	IP66 with appropriate cable gland			
Ambient temperature	-40 to +80°C		-40°C to +75°C	-40°C to +60°C
	The application is limited also by the temperature range of the valve.			
Class of insulation	F (155 °)			
Electrical connection	The electrical connection is made within the housing connection chamber on an accessible screw terminal. The cable entry to the connecting chamber is made through 1/2" NPT thread suitable for fitting an approved Ex db IIC cable gland.			
Elect. Power	DC	Pn (hot)	8 W	
		P (cold) 20°C	9 W	
	AC	Pn (holding)	8 W	
		Attraction cold	9 W	
Weight	1100 g (with coil)			
Voltages "Un" -10% to +10% of the Un	VAC/Hz	Code	VDC	Code
	24/50-60	P0	24	C2
	110-115/50-60	1P	48	C4
	220-230/50-60	3P	110	C5

To Order a Coil choose Coil Ref + Voltage Code, example: 483270 for 24VDC = 483270C2



**Plunger tube:**

The plunger tube is welded to the stainless steel plate and is thus integrated to the housing which is screwed on the valve body. This electrical part is supplied only as complete unit mounted on a valve, as the "Ex db" protection depends on minimum gap between plunger tube, plate and housing.

