

GT14

Graphic Operator Terminals

Next generation HMIs

The new standard for 5.7" touch panels



MORE FLEXIBILITY

Multi-channel and data-logging functions as standard

INTELLIGENT DESIGN

320x240 pixels TFT screen displaying 65,536 colours

IMPROVED COMMUNICATION

Ethernet, RS422/485 and USB interfaces

SIMPLER OPERATION

Seamless connection to Mitsubishi Automation products

Setting new standards for price and performance



Test modifications without disrupting production

The GT14 is the latest addition to the GOT1000 series of HMIs, and sets new performance benchmarks for mid-range, 5.7" panel mount terminals. Boasting all the functions for which Mitsubishi Electric HMIs have become renowned, at prices which make them one of the most cost-effective on the market, these new operator terminals offer a host of new features and benefits, including an SD card slot, USB ports, Ethernet communications options, a TFT screen capable of displaying 65,536 colours, LED backlighting and analogue touch functionality.

The GT14 is a 5.7" HMI, available in both monochrome (STN) and colour (TFT) versions, providing a screen resolution of 320x240 pixels, and a host of features and functions that bring increased flexibility and capability to control systems.

The long-life LED backlighting ensures ease of viewing in a range of lighting conditions.

Enhanced connectivity

A key feature of the GT14 is the range of different devices to which it can connect. RS232 and RS422/485 ports provide connectivity to PCs for programming and data upload, as well as to serial devices such as bar code readers. The addition of an Ethernet port provides high speed connectivity to other networked devices, including PLCs. USB ports enable the connection of a keyboard or mouse, as well as memory sticks for program downloads/back-ups and data storage.

In addition to the conventional USB port on the rear of the terminal, the GT14 also features a USB port on the front face, making it easier to transfer data to and from the terminal without having to open up the panel. The USB port is protected by a cover which maintains the overall IP67f protection of the panel.

Completing the communications possibilities, the GT14 is the first model in the GOT1000 series to feature an SD card slot, enabling standard SD cards to be used for logging and back-up/restore functions for programs and parameters.

Further enhancing connectivity within an integrated system, the GT14 offers a FA Transparent function which enables a computer connected to the GT14 to connect seamlessly with other Mitsubishi Electric factory automation products such as PLCs, inverters and servo amplifiers for programming or troubleshooting.

Enhanced functionality

With internal memory expanded to 9 MB as standard, the GT14 can save up to 2,000 data points, while SD cards and USB memory sticks can provide additional memory for storing or transferring data. In addition, for increased flexibility, the GT14 is able to log data from multiple connected devices such as PLCs and temperature controllers. In addition, with its multi-channel function, a single GT14 can monitor and control up to two channels of factory automation products connected either over Ethernet or serial communications. For example, you could connect a PLC with a servo amplifier to one channel and a frequency inverter or temperature controller to the other, and then alternate between the two to monitor both devices.

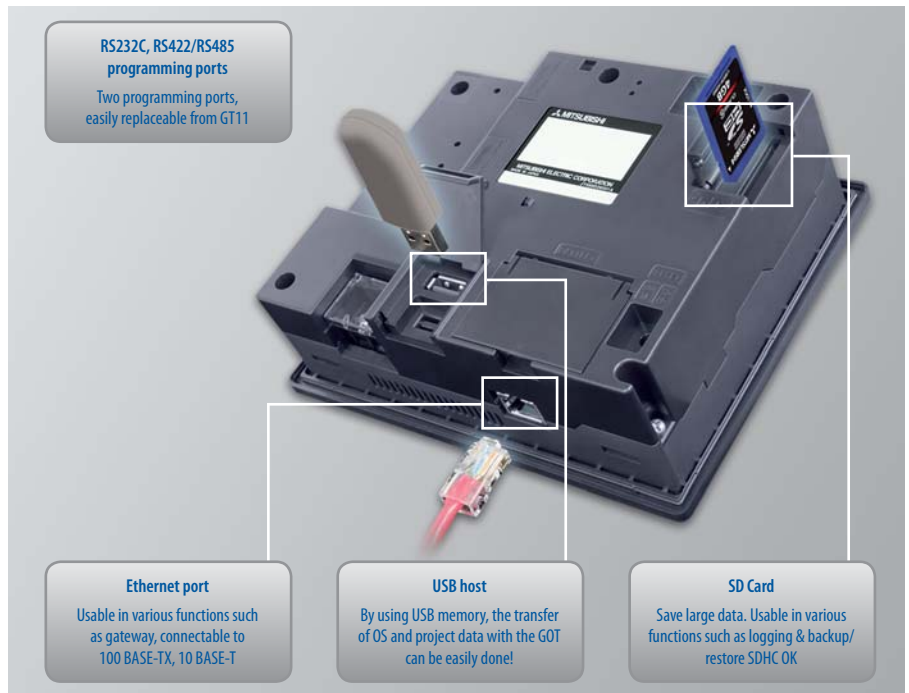


Enjoy the brightness of the GT14 TFT screen with 65536 colours and LED backlight

Benchmark capabilities

The GT14 offers a host of features and functions as standard that are normally only available on much more expensive HMIs. Complementing its data logging capabilities, the GT14 features recipe and alarm management, multi-level security access and password protection, trending displays and scripting functions. The high speed and powerful microprocessor ensures that the touchscreen interface is always fast and responsive.

In addition, GT14 units come with multiple user interface languages pre-installed, along with Unicode support that enables display of a large number of international character sets. This makes it very easy to reconfigure and customise machine control interfaces for worldwide deployment.

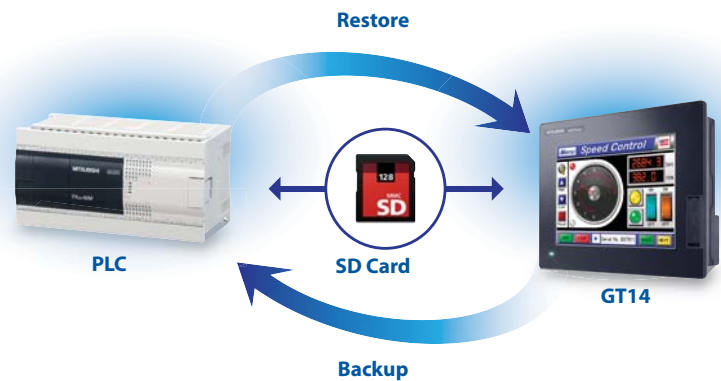


A broad variety of interfaces like Ethernet, USB, RS232 and RS422/485 ports and SD card slot is one key feature of the GT14

Simple programming

The GT14 is equipped with a comprehensive library of common functions, objects and shapes, enabling you to build projects quickly and easily. The GT14 is also fully compatible with Mitsubishi Electric's GT Works3 software for screen design. Reducing screen development time by up to 70 % when compared with conventional HMI programming environments. GT Works3 provides a comprehensive suite of software tools that simplify installation as well as data handling and maintenance tasks.

The main component is the intuitive and user-friendly GT Designer HMI software. It comes with a full library of ready-to-use graphics objects and a large number of fonts for building informative and intuitive interface screens. Together with the integrated GT Simulator, it enables you to get your HMI projects up and running without the traditional debugging and fault-finding headaches.



SD cards and USB's provide additional memory

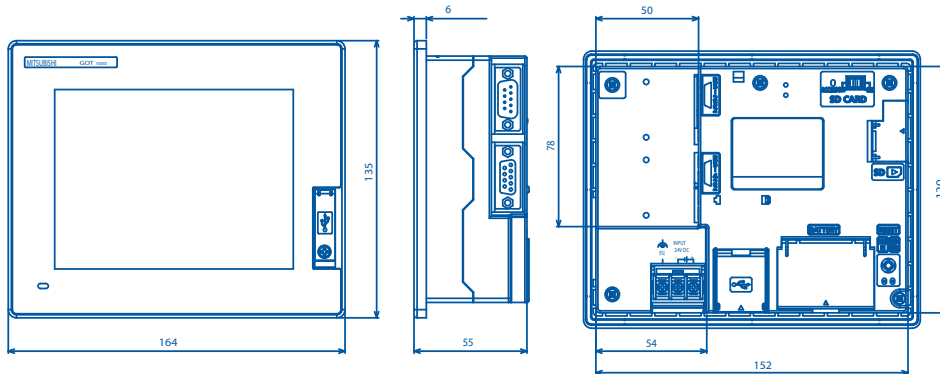


User friendly GT Designer HMI software

Specifications ///

		GT1455-QTBDE	GT1450-QLBDE
Power	Input supply	24V DC (+10 %, -15 %)	
	Consumption	Less than 8.40 W	
Display	Type	TFT LCD	Monochrome LCD
	Size WxH [mm]	115x86	
	Touch panel	Analog resistive film	
	Backlight	70,000 h or longer	
Memory	9 Mbytes built-in flash memory		
Built-in interface	RS422/485	D-Sub 9pin (female)	
	RS232	D-Sub 9pin (male)	
	Ethernet	100 BASE-TX, 10 BASE-T	
	USB	TYPE-A USB (Full Speed 12 Mbps), host Mini-B USB (Full Speed 12 Mbps), device	
	SD card	Supports: SDHC memory card, SD memory card	
	Environment	Operating temperature	0–50 °C
Storage temperature		-20–60 °C	
Ratings		IP67f (front panel only)	
External dimensions WxHxD [mm]	164x135x55		
Weight	0.7 kg		
Programming	GT Designer3 version 1.37P or later		

GT1455-QTBDE/GT1450-QLBDE



All dimensions in mm

EUROPEAN BRANCHES

MITSUBISHI ELECTRIC EUROPE B.V. Gothaer Straße 8 D-40880 Ratingen Phone: +49 (0)2102 / 486-0	GERMANY
MITSUBISHI ELECTRIC EUROPE B.V.-org.sl. CZECH REP. Radlická 714/113a CZ-158 00 Praha 5 Phone: +420 - 251 551 470	
MITSUBISHI ELECTRIC EUROPE B.V. 25, Boulevard des Bouvets F-92741 Nanterre Cedex Phone: +33 (0)1 / 55 68 55 68	FRANCE
MITSUBISHI ELECTRIC EUROPE B.V. Viale Colleoni 7 I-20041 Agrate Brianza (MB) Phone: +39 039 / 60 53 1	ITALY
MITSUBISHI ELECTRIC EUROPE B.V. Krakowska 50 PL-32-083 Balice Phone: +48 (0)12 / 630 47 00	POLAND
MITSUBISHI ELECTRIC EUROPE B.V. 52, bld. 3 Kosmodamijskaya nab 8 floor RU-115054 Moscow Phone: +7 495 721-2070	RUSSIA
MITSUBISHI ELECTRIC EUROPE B.V. Carrera de Rubi 76-80 E-08190 Sant Cugat del Vallés (Barcelona) Phone: 902 131121 // +34 935653131	SPAIN
MITSUBISHI ELECTRIC EUROPE B.V. Travellers Lane UK-Hatfield, Herts. AL10 8XB Phone: +44 (0)1707 / 27 61 00	UK

EUROPEAN REPRESENTATIVES

GEVA Wiener Straße 89 AT-2500 Baden Phone: +43 (0)2252 / 85 55 20	AUSTRIA	Beijer Electronics A/S Lykkegårdsvej 17 DK-4000 Roskilde Phone: +45 (0)46 / 75 76 66	DENMARK	ALFATRADE Ltd. 99, Paola Hill Malta - Paola PLA 1702 Phone: +356 (0)21 / 697 816	MALTA	Sirius Trading & Services Aleea Lacul Morii Nr. 3 RO-060841 Bucuresti, Sector 6 Phone: +40 (0)21 / 430 40 06	ROMANIA	Omni Ray AG Im Schörl 5 CH-8600 Dübendorf Phone: +41 (0)44 / 802 28 80	SWITZERLAND	I.C. SYSTEMS LTD. 23 Al-Saad-Al-Alee St. EG - Sarayat, Maadi, Cairo Phone: +20 (0)2 / 235 98 548	EGYPT
TECHNIKON Oktyabrskaya 19, Off. 705 BY-220030 Minsk Phone: +375 (0)17 / 210 46 26	BELARUS	Beijer Electronics Eesti OÜ Pärnu mnt.160i EE-11317 Tallinn Phone: +372 (0)6 / 51 81 40	ESTONIA	INTEHISIS srl bld. Traian 23/1 MD-2060 Kishinev Phone: +373 (0)22 / 66 4242	MOLDOVA	INEA RBT d.o.o. Izletnicka 10 SER-113000 Smederevo Phone: +381 (0)26 / 615 401	SERBIA	GTS Bayraktar Bulvarı Nutuk Sok. No:5 TR-34775 Yukarı İSTANBUL Phone: +90 (0)216 526 39 90	TURKEY	ILAN & GAVISH Ltd. 24 Shenkar St., Kiryat Arie IL-49001 Petah-Tiqva Phone: +972 (0)3 / 922 18 24	ISRAEL
ESCO D & A Culliganlaan 3 BE-1831 Diegem Phone: +32 (0)2 / 717 64 30	BELGIUM	Beijer Electronics OY Peltioie 37 FIN-28400 Ulvila Phone: +358 (0)207 / 463 540	FINLAND	HIFLEX AUTOM. B.V. Jána Derku 22 NL-2984 CD Ridderkerk Phone: +31 (0)180 - 46 60 04	NETHERLANDS	SIMAP s.r.o. Jána Derku 1671 SK-911 01 Trenčín Phone: +421 (0)32 743 04 72	SLOVAKIA	CSC Automation Ltd. 4-B, M. Raskovoyi St. UA-02660 Kiev Phone: +380 (0)44 / 494 33 55	UKRAINE	CEG INTERNATIONAL Cebaco Center/Block A Autostrade DORA Lebanon - Beirut Phone: +961 (0)1 / 240 430	LEBANON
Koning & Hartman b.v. Woluwelaan 31 BE-1800 Vilvoorde Phone: +32 (0)2 / 257 02 40	BELGIUM	UTECO S, Mavrogenous Str. GR-18542 Piraeus Phone: +30 211 / 1206 900	GREECE	Koning & Hartman b.v. Haarlerbergweg 21-23 NL-1101 CH Amsterdam Phone: +31 (0)20 / 587 76 00	NETHERLANDS	PROCONT, spol. s co. Prešov Kúpeľná 1/A SK-080 01 Prešov Phone: +421 (0)51 7580 611	SLOVAKIA	Systemgroup 2 M. Krivonosy St. UA-03680 Kiev Phone: +380 (0)44 / 490 92 29	UKRAINE	CBI Ltd. Private Bag 2016 ZA-1600 Isando Phone: +27 (0)11 / 977 0770	SOUTH AFRICA
INEA RBT d.o.o. Aleja Lipa 56 BA-71000 Sarajevo Phone: +387 (0)33 / 921 164	BOSNIA AND HERZEG.	MELTRADE Kft. Fertő utca 14. HU-1107 Budapest Phone: +36 (0)1 / 431-9726	HUNGARY	Beijer Electronics AS Postboks 487 NO-3002 Drammen Phone: +47 (0)32 / 24 30 00	NORWAY	INEA RBT d.o.o. Stegne 11 SI-1000 Ljubljana Phone: +386 (0)1 / 513 8116	SLOVENIA	Beijer Electronics AB Box 426 SE-20124 Malmö Phone: +46 (0)40 / 35 86 00	SWEDEN		
AKHNATON 4, Andrei Ljapchev Blvd., PO Box 21 BG-1756 Sofia Phone: +359 (0)2 / 817 6000	BULGARIA	100 Kazpromavtomatika Ul. Zhambyla 28 KAZ-100017 Karaganda Phone: +7 7212 / 50 10 00	KAZAKHSTAN	Fonseca S.A. R. João Francisco do Casal 87/89 PT - 3801-997 Aveiro, Esigueira Phone: +351 (0)234 / 303 900	PORTUGAL						
INEA RBT d.o.o. Losinjka 4 a HR-10000 Zagreb Phone: +385 (0)1 / 36 940 -01 / -02 / -03	CROATIA	Beijer Electronics SIA Ritausmas iela 23 LV-1058 Riga Phone: +371 (0)784 / 2280	LATVIA								
AutoCont C.S. s.r.o. Technologická 374/6 CZ-708 00 Ostrava-Pustkovec Phone: +420 595 691 150	CZECH REPUBLIC	Beijer Electronics UAB Savanoriu Pr. 187 LT-02300 Vilnius Phone: +370 (0)5 / 232 3101	LITHUANIA								



Version check



Mitsubishi Electric Europe B.V. /// FA - European Business Group /// Gothaer Straße 8 /// D-40880 Ratingen /// Germany
Tel.: +49(0)2102-4860 /// Fax: +49(0)2102-4861120 /// info@mitsubishi-automation.com /// www.mitsubishi-automation.com

Specifications subject to change /// Art. no. 253281-A /// 06.2012

All trademarks and copyrights acknowledged.