

S3700 Series Enterprise Switches





S3700 Series Enterprise Switches

Product Overview

The S3700 series enterprise switches (S3700s) are next-generation energy-saving Layer 3 switches. The S3700 utilizes cutting-edge hardware and Huawei Versatile Routing Platform (VRP) software to provide high-performance access and aggregation to an enterprise campus network. The S3700 is easy to install and maintain. With its flexible VLAN deployment, PoE capabilities, comprehensive routing functions, and capability to migrate to an IPv6 network, the S3700 helps enterprise customers build next-generation IT networks. In addition, the S3700 uses advanced reliability technologies such as stacking, VRRP, and RRPP, enhancing network reliability and diversity.

The S3700 is a box device that is 1 U high. It is available in a standard version (SI), an enhanced version (EI), and an advanced version (HI). The SI version provides Layer 2 functions and basic Layer 3 functions. The EI version supports complex routing protocols and provides more functions than the SI version offers. In addition to the functions of EI, HI supports higher-specification MAC addresses, routes, and multicast table entries, along with powerful hardware capabilities.

Product Appearance

S3700-26C-HI



- Twenty-two 10/100Base-TX ports, two gigabit combo ports (10/100/1000Base-T or 100/1000Base-X)
- A two-port gigabit optical-port card can be selected as the uplink interface card
- Supports dual pluggable power supplies, AC power supplies, and DC power supplies
- Forwarding performance: 9.3 Mpps

S3700-28TP-SI-AC



S3700-28TP-EI-AC



S3700-28TP-SI-DC



S3700-28TP-EI-DC



- Twenty-four 10/100Base-TX ports, two 1000Base-X SFP ports, and two gigabit combo ports (10/100/1000Base-T or 100/1000Base-X)
- Two models: AC model and DC model
- Forwarding performance: 9.6 Mpps

S3700-28TP-EI-MC-AC



- Twenty-four 10/100Base-TX ports, two 1000Base-X SFP ports, two monitor ports, and two gigabit combo ports (10/100/1000Base-T or 100/1000Base-X)
 - AC power supply
 - Forwarding performance: 9.6 Mpps
-

S3700-28TP-PWR-SI



S3700-28TP-PWR-EI



- Twenty-four 10/100Base-TX ports, two 1000Base-X SFP ports, and two gigabit combo ports (10/100/1000Base-T or 100/1000Base-X)
 - AC power supply
 - PoE+
 - Forwarding performance: 9.6 Mpps
-

S3700-28TP-EI-24S-AC



- Twenty-four 100Base-FX SFP ports, two 1000Base-X SFP ports, and two gigabit combo ports (10/100/1000Base-T or 100/1000Base-X)
 - AC power supply
 - Forwarding performance: 9.6 Mpps
-

S3700-52P-SI-AC



S3700-52P-EI-AC



S3700-52P-EI-DC



- Forty-eight 10/100Base-TX ports, two 100/1000Base-X SFP ports, and two 1000Base-X SFP ports
 - AC and DC power supply for the EI version; AC power supply for the SI version
 - Forwarding performance: 13.2 Mpps
-

S3700-52P-PWR-SI/EI



- Forty-eight 10/100Base-TX ports, two 100/1000Base-X SFP ports, and two 1000Base-X SFP ports
 - AC power supply
 - PoE+
 - Forwarding performance: 13.2 Mpps
-

S3700-52P-EI-48S-AC



S3700-52P-EI-48S-DC



- Forty-eight 100Base-FX SFP ports, two 100/1000Base-X SFP ports, and two 1000Base-X SFP ports
- Two models: AC model and DC model
- Forwarding performance: 13.2 Mpps

S3700-52P-EI-24S-AC



S3700-52P-EI-24S-DC



- Twenty-four 10/100Base-TX ports, twenty-four 100Base-FX SFP ports, two 100/1000Base-X SFP ports, and two 1000Base-X SFP ports
- Two models: AC model and DC model
- Forwarding performance: 13.2 Mpps

Product Features

Reliable service support

- The S3700 provides the Multi-VPN-Instance CE (MCE) function to isolate users in different VLANs, ensuring data security and reducing costs.
- The S3700 supports multicast functions such as IGMP snooping, IGMP filter, fast leave, and IGMP proxy. It supports line-speed replication of multicast packets between VLANs, multicast load balancing among member interfaces of a trunk, and controllable multicast, meeting requirements for IPTV and other multicast services.

PoE function

- The S3700 PWR offers an improved Power over Ethernet (PoE) function. Users can determine when or whether a PoE port provides power.
- The S3700 PWR can use PoE power supplies with different power levels to provide -48V DC power for powered devices (PDs), such as IP Phones, WLAN APs, and Bluetooth APs. As a power sourcing equipment (PSE), the S3700 PWR complies with IEEE 802.3af and 802.3at (PoE+) and can work with PDs that are incompatible with 802.3af or 802.3at. Each port provides a maximum of 30W of power, complying with IEEE 802.3at. The PoE+ function increases the maximum power available to each port and implements intelligent power management for high power consumption applications. This facilitates the ease of PD use. PoE ports continue to work while in power-saving mode.

Comprehensive QoS policies and security mechanisms

- The S3700 classifies complex traffic based on packet information such as the 5-tuple, IP preference, ToS, DSCP, IP protocol type, ICMP type, TCP source port, VLAN ID, Ethernet protocol type, and CoS. The S3700 supports a flow-based two-rate three-color CAR. Each port supports eight priority queues and multiple queue scheduling algorithms, such as WRR, DRR, SP, WRR+SP, and DRR+SP. Together, these features ensure high-quality voice, video, and data services.
- The S3700 provides multiple security measures to defend against Denial of Service (DoS) attacks, as well as attacks against networks or individual users. DoS attack types include SYN Flood attacks, Land attacks, Smurf attacks, and ICMP Flood attacks. Attacks on networks refer to STP BPDU/root attacks. Attacks on users include bogus DHCP server attacks, man-in-the-middle attacks, IP/MAC spoofing attacks, and DHCP request flood attacks. DoS attacks that change the CHADDR field in DHCP packets are another type of attack aimed at users.
- The S3700 supports DHCP snooping, which generates user binding entries based on users' access interfaces, MAC addresses, IP addresses, IP address leases, and VLAN IDs. DHCP snooping discards invalid packets that do not match any binding entries, such as ARP spoofing packets and IP spoofing packets. This prevents hackers from using ARP packets to initiate man-in-the-middle attacks on campus networks. The interface connected to a DHCP server can be configured as a trusted interface to protect the system against bogus DHCP server attacks.
- The S3700 supports strict ARP learning, which prevents ARP spoofing attacks that exhaust ARP entries. The S3700 also provides IP source guard to prevent DoS attacks caused by MAC address spoofing, IP address spoofing, and MAC/IP spoofing.
- The S3700 supports centralized MAC address authentication and 802.1x authentication. It authenticates users based on statically or dynamically bound user information, such as the user name, IP address, MAC address, VLAN ID, access interface, and flag indicating whether antivirus software is installed. VLANs, QoS policies, and ACLs can be dynamically applied to users.
- The S3700 can limit the number of MAC addresses learned on an interface to prevent attackers from exhausting MAC address entries by using bogus source MAC addresses. This function minimizes the packet flooding that occurs when users' MAC addresses cannot be found in the MAC address table.

Various routing and IPv6 features

- The S3700 supports various routing protocols, including static routing, RIPv1, RIPv2, OSPF, IS-IS and BGP.
- S3700 hardware supports IPv4/IPv6 dual stack, IPv6 over IPv4 tunnels (including manual tunnels, 6to4 tunnels, and ISATAP tunnels), and Layer 3 line-speed forwarding. The S3700 can be deployed on IPv4 networks, IPv6 networks, or networks that run both IPv4 and IPv6. This makes networking flexible and enables a network to migrate from IPv4 to IPv6.
- The S3700 supports various IPv6 routing protocols including RIPng and OSPFv3. It uses the IPv6 Neighbor Discovery Protocol (NDP) to manage the packets exchanged between neighbors. The S3700 also provides a path MTU (PMTU) discovery mechanism to select an appropriate MTU on the path from the source to the destination, optimizing network resource utilization and obtaining maximum throughput.

High scalability and reliability

- The S3700 supports intelligent stacking (iStack). Multiple S3700s can be connected with stack cables to set up a stack, which functions as a virtual switch. The backup switch takes over services when the master switch fails, reducing service interruption time. Stacks support intelligent upgrades so that users do not need to change the software version of a switch when adding it to a stack. The iStack function

allows users to connect multiple switches with stack cables to expand the system capacity. These switches can be managed using a single IP address, which greatly reduces the costs of system expansion, operation, and maintenance. Compared with traditional networking technologies, iStack has distinct advantages regarding scalability, reliability, and system architecture.

- Besides STP, RSTP, and MSTP, the S3700 supports enhanced Ethernet reliability technologies, such as Smart Link and RRPP, which implement millisecond-level protection switchovers and ensure network reliability. The S3700 also provides RRPP multi-instance for load balancing among links, optimizing bandwidth usage.
- The S3700 supports Ethernet Ring Protection Switching (ERPS), also referred to as G.8032. As the latest ring network protocol, ERPS was developed based on traditional Ethernet MAC and bridging functions and uses mature Ethernet OAM function and a ring automatic protection switching (R-APS) mechanism to implement millisecond-level protection switching. ERPS supports various services and allows flexible networking, helping customers build a network with lower OPEX and CAPEX.
- The S3700 supports BFD, which provides millisecond-level fault detection for protocols, such as OSPF, IS-IS, VRRP, and PIM to improve network reliability. Complying with IEEE 802.3ah and 802.1ag, the S3700 supports point-to-point Ethernet fault management and can detect faults within the last mile of an Ethernet link to users.
- The reliable design of the S3700 is highly expansible and compatible. The S3700 can work with devices on existing networks, which protects customer investments and enables customers to deploy new services.

Maintenance-free design and manageability

- The S3700 offers a maintenance-free design which supports batch remote upgrades. The S3700 provides multiple maintenance and management modes to help users monitor various data. In addition, it supports HGMP v2, SNMP, NTP, SSH v2, HWTACACS, RMON, port-based traffic statistics, and NQA.
- The S3700 supports GARP VLAN Registration Protocol (GVRP), which dynamically distributes, registers, and propagates VLAN attributes to reduce network administrator workloads and ensure the correct configuration of VLANs. In a complex network topology, GVRP simplifies VLAN configuration and reduces network communication faults caused by incorrect VLAN configuration.
- The S3700 supports MUX VLAN. MUX VLAN isolates the Layer 2 traffic between interfaces in a VLAN. Interfaces in a subordinate separate VLAN can communicate with ports in the principal VLAN, but cannot communicate with each other. MUX VLAN is typically used on an enterprise intranet to isolate user interfaces from each other while still allowing them to communicate with server interfaces. This function prevents communication between network devices connected to certain interfaces or interface groups, but allows these devices to communicate with the default gateway.

Unique fan-free and energy-saving design

- S3700s that are equipped with 24 electrical ports offer a fan-free design, which dramatically reduces power consumption and eliminates noise. This design reduces mechanical faults and protects the device against damage caused by condensed water and dust.
- The S3700 incorporates an energy-saving integrated circuit design to ensure even heat dissipation. Idle ports can enter a sleep mode to further reduce power consumption.
- Radiation produced by the S3700 is within the standard range for electric appliances and causes no harm to the human body.

Product Specifications

Item	S3700-SI*	S3700-EI*	S3700-HI*
100M port	S3700-28TP-EI**/S3700-28TP-SI/S3700-28TP-PWR-SI/S3700-28TP-PWR-EI/ S3700-28TP-EI-MC: 24*10/100Base-TX S3700-52P-EI/S3700-52P-SI/S3700-52P-PWR-EI/S3700-52P-PWR-SI: 48*10/100Base-T S3700-28TP-EI-24S: 24*100Base-FX S3700-52P-EI-24S: 24*10/100Base-T+24*100Base-FX S3700-52P-EI-48S: 48*100Base-FX S3700-26C-HI: 22*10/100Base-T		
1000M port	SI/EI 28 ports: 2*1000Base-X, 2*GE Combo SI/EI 52 ports: 2*100/1000Base-X, 2*1000Base-X S3700-26C-HI: 2*GE Combo		
Extended slot	The S3700-26C-HI provides an extended slot for an uplink subcard		
MAC address table	IEEE 802.1d compliance 16 K MAC address entries MAC address learning and aging Static, dynamic, and blackhole MAC address entries Packet filtering based on source MAC addresses		32 K MAC address entries Same as EI for all other items
VLAN	4 K VLANs Guest VLANs, voice VLAN, and super VLAN VLAN assignment based on MAC addresses, protocols, and IP subnets QinQ Selective QinQ 1:1 VLAN mapping N:1 VLAN mapping		
Reliability	RRPP (ring topology, intersecting rings, and multi-instance), implementing protection switchover within 50 ms Smart Link tree topology and Smart Link multi-instance, providing the millisecond-level protection switchover STP(IEEE 802.1d), RSTP(IEEE 802.1w), and MSTP(IEEE 802.1s) BPDU protection, root protection, and loop protection Smart Ethernet Protection (SEP) ERPS(Supported by S3700-26C-HI)		
	N/A	BFD for OSPF, BFD for IS-IS, BFD for VRRP, and BFD for PIM	
IP routing	Static routing, RIPv1, RIPv2, and ECMP		
	N/A	OSPF, IS-IS, and BGP	
IPv6 features	Neighbor Discovery (ND) Path MTU (PMTU) IPv6 ping, IPv6 tracert, and IPv6 Telnet Manually configured tunnel 6to4 tunnel ISATAP tunnel ACLs based on the source IPv6 address, destination IPv6 address, Layer 4 ports, or protocol type MLD v1/v2 snooping		

Item	S3700-SI*	S3700-EI*	S3700-HI*
Multicast	1 K multicast groups IGMP v1/v2/v3 snooping and IGMP fast leave Multicast VLAN and multicast replication between VLANs Multicast load balancing among member ports of a trunk Controllable multicast Port-based multicast traffic statistics		2048 multicast groups Same as EI for all other items
	N/A	IGMP v1/v2/v3, PIM-SM, PIM-DM, and PIM-SSM	
QoS/ACL	Rate limiting on packets sent and received by an interface Packet redirection Port-based traffic policing and two-rate three-color CAR Eight queues on each port WRR, DRR, SP, WRR+SP, and DRR+SP queue scheduling algorithms WRED (S3700-26C-HI) Re-marking of the 802.1p priority and DSCP priority Packet filtering on Layers 2 through 4, filtering out invalid frames based on the source MAC address, destination MAC address, source IP address, destination IP address, port number, protocol type, and VLAN ID Rate limiting in each queue and traffic shaping on ports		
Security	User privilege management and password protection DoS attack defense, ARP attack defense, and ICMP attack defense Binding of the IP address, MAC address, interface, and VLAN Port isolation, port security, and sticky MAC Blackhole MAC address entries Limit on the number of learned MAC addresses 802.1x authentication and limit on the number of users on an interface AAA authentication, RADIUS authentication, HWTACACS authentication, and NAC SSH v2.0 CPU defense Blacklist and whitelist		
Surge protection	6 KV surge protection capability on service ports (1 KV on service ports on PoE devices)		
Management and maintenance	iStack (except the S3700-26C-HI) MAC Forced Forwarding (MFF) Remote configuration and maintenance using Telnet Auto-Config. Virtual cable test Ethernet OAM (IEEE 802.3ah and 802.1ag) Dying gasp power-off alarm (S3700-28TP-EI-MC-AC and S3700-26C-HI) Port mirroring and RSPAN (remote port mirroring) SNMPv1/v2/v3 and RMON MUX VLAN and GVRP Web NMS Auto-Config and HGMP SSHv2 HTTPS (S3700-26C-HI) 802.3az EEE (S3700-26C-HI) System logs and alarms of different levels		

Item	S3700-SI*	S3700-EI*	S3700-HI*
Operating environment	Operating temperature: 0°C–50°C (long term); -5°C–55°C (short term) Relative humidity: 10%–90% (non-condensing)		
Power supply	AC: Rated voltage range: 100 V to 240 V AC; 50/60 Hz Maximum voltage range: 90 V to 264 V AC; 50/60 Hz DC: Rated voltage range: -48 V to -60 V DC Maximum voltage range: -36 V to -72 V DC Note: PoE-support switches do not use DC power supplies.		
Dimensions (W x D x H)	S3700-28TP-EI/SI, S3700-28TP-EI-MC, S3700-28TP-EI-24S, S3700-52P-EI/SI , S3700-26C-HI: 442 mm x 220 mm x 43.6 mm S3700-28TP-PWR-EI/SI, S3700-52P-EI-48S, S3700-52P-EI-24S, S3700-52P- PWR-EI/SI: 442 mm x 420 mm x 43.6 mm		
Weight	S3700-28TP-SI<2.5Kg S3700-52P-SI<3Kg S3700-28TP-PWR-SI<4Kg (without power supply) S3700-52P-PWR-SI<4.3Kg (without power supply)	S3700-28TP-EI<2.5Kg S3700-28TP-EI-MC<2.5Kg S3700-28TP-EI-24S<2.6Kg S3700-52P-EI<3Kg S3700-52P-EI-24S<4.8Kg S3700-52P-EI-48S<4.8Kg S3700-28TP-PWR-EI<4Kg (without power supply) S3700-52P-PWR-EI< 4.3Kg (without power supply)	S3700-26C-HI<3.3KG (without power supply)
Power consumption	S3700-28TP-SI<20W S3700-52P-SI<38W S3700-28TP-PWR-SI<818W (PoE: 740W) S3700-52P-PWR-SI<880W (PoE: 740W)	S3700-28TP-EI<20W S3700-28TP-EI-MC<20W S3700-28TP-EI-24S<52W S3700-52P-EI<38W S3700-52P-EI-24S<65W S3700-52P-EI-48S<90W S3700-28TP-PWR-EI<818W (PoE: 740W) S3700-52P-PWR-EI<880W (PoE: 740W)	S3700-26C-HI<50W

*:The S3700 is provided in the standard version (SI) , enhanced version (EI), and advanced version (HI).

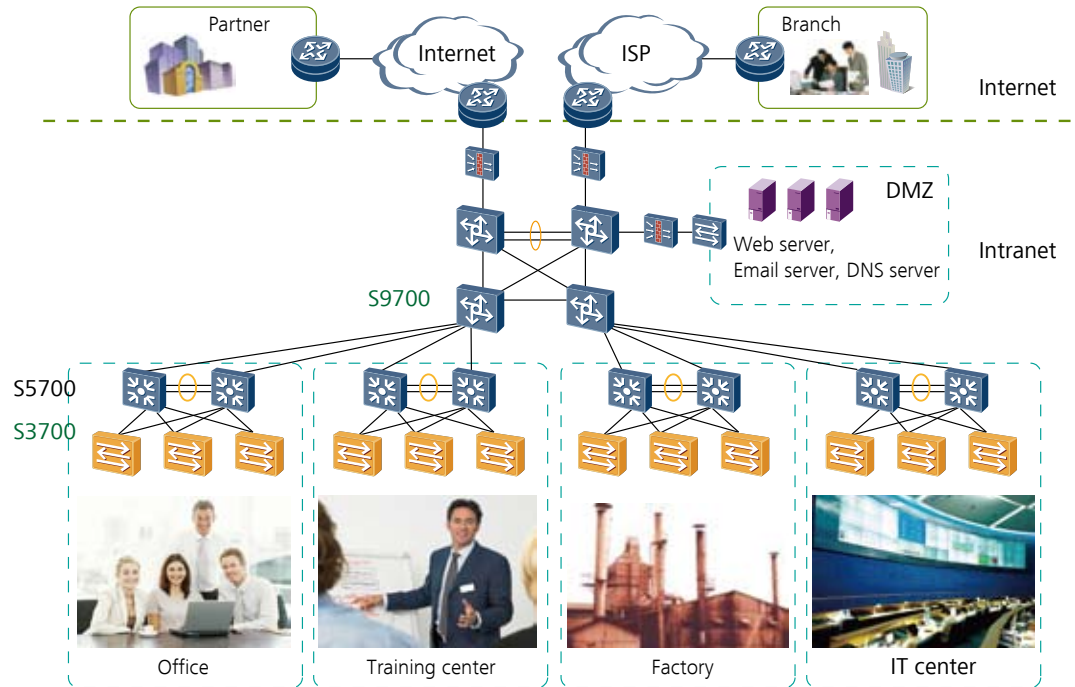
The S3700 switches of the EI series are collectively called S3700-EI, the S3700 switches of the SI series are collectively called S3700-SI, and the S3700 switches of the HI series are collectively called S3700-HI.

**S3700-28TP-EI is short for S3700-28TP-EI-AC and S3700-28TP-EI-DC. As product versions are irrelevant to the power supply mode, the product names mentioned in product specifications do not contain AC or DC. This rule also applies to other product models.

Applications

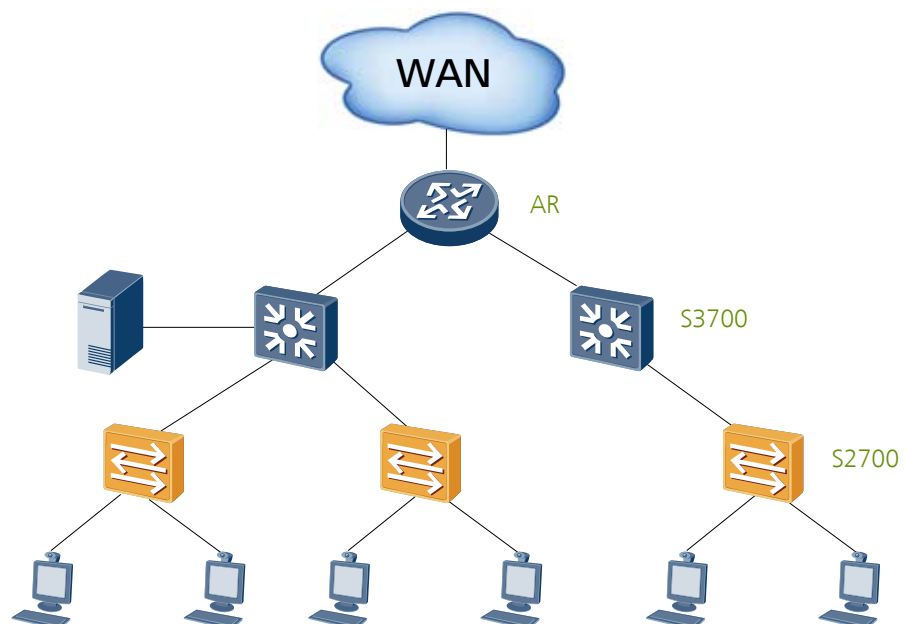
Large-scale Enterprise Networks

The S3700 can function as an access device on large-scale enterprise networks.



Medium- and Small-scale Enterprise Networks

Medium- and small-scale enterprises can use S3700s as core switches. The S3700s provide routing functions to enable users in different departments to communicate with each other. Multiple S3700s can be stacked to expand system capacity and increase the number of ports.



Product List

Product Description

S3700-28TP-SI-DC Mainframe(24 FE RJ45,2 GE Combo,2 GE SFP,DC -48V)
S3700-28TP-EI-DC Mainframe(24 FE RJ45,2 GE Combo,2 GE SFP,DC -48V)
S3700-52P-EI-DC Mainframe(48 FE RJ45,4 GE SFP,DC -48V)
S3700-52P-PWR-EI Mainframe(48 FE RJ45,4 GE SFP,PoE,Dual Slots of power,Without Power Module)
S3700-28TP-PWR-EI Mainframe(24 FE RJ45,2 GE Combo,2 GE SFP ,PoE,Dual Slots of power,Without Power Module)
S3700-28TP-EI-AC Mainframe(24 FE RJ45,2 GE Combo,2 GE SFP,AC 110/220V)
S3700-28TP-EI-24S-AC Mainframe(24 FE SFP,2 GE Combo,2 GE SFP,AC 110/220V)
S3700-28TP-EI-MC-AC Mainframe(24 FE RJ45,2 GE Combo,2 GE SFP,2 MC ports,AC 110/220V)
S3700-52P-SI-AC Mainframe(48 FE RJ45,4 GE SFP,AC 110/220V)
S3700-52P-EI-48S-AC Mainframe(48 FE SFP,4 GE SFP,AC 110/220V)
S3700-28TP-SI-AC Mainframe(24 FE RJ45,2 GE Combo,2 GE SFP,AC 110/220V)
S3700-52P-EI-24S-AC Mainframe(24 FE RJ45,24 FE SFP,4 GE SFP,AC 110/220V)
S3700-52P-EI-AC Mainframe(48 FE RJ45,4 GE SFP,AC 110/220V)
S3700-52P-EI-48S-DC Mainframe(48 FE SFP,4 GE SFP,DC -48V)
S3700-52P-EI-24S-DC Mainframe(24 FE RJ45,24 FE SFP,4 GE SFP,DC -48V)
S3700-26C-HI Mainframe (22 FE RJ45,2 GE Combo,Dual Slots of power,Single Slot of Flexible Card,Without Flexible Card and Power Module)
2-Port GE SFP Optical Interface Card (Used In S3700-26C-HI)
170W DC power module (Used In S3700-26C-HI)
170W AC Power Module(Used In S3700-26C-HI)
S3700-52P-PWR-SI Mainframe(48 FE RJ45,4 GE SFP,PoE,Dual Slots of Power,Including Single 500W AC Power)
S3700-28TP-PWR-SI Mainframe(24 FE RJ45,2 GE Combo,2 GE SFP,PoE,Dual Slots of Power,Including Single 500W AC Power)
250W AC Power Module
500W AC Power Module

For more information, visit <http://enterprise.huawei.com> or contact your local Huawei sales office.

HUAWEI TECHNOLOGIES CO.,LTD.
Huawei Industrial Base
Bantian Longgang
Shenzhen 518129,P.R.China
Tel: +86 755 28780808