

Changes for the Better

Mitsubishi iQ Platform-compatible Screen Design Software
For Graphic Operation Terminal GOT1000
MELSOFT GT Works3



**Experience the dawn of new era
in visualization design!**

MELSOFT GT Works3

iQ Platform

Advanced design environment software – Experience the dawn of a new era in visualization design

To quickly transform the front end of your machine into a more user friendly and sophisticated interface you need a design environment that is both intuitive and efficient. MELSOFT GT Works3 is the quintessential environment for visual design and configuration.

User-oriented functions are integrated based on three main concepts - simplicity, clarity and ease-of-use.

MELSOFT GT Works3

Realistic
High-Definition
Graphics
Fine

Simple Setting
Simple

Intuitive Operation –
as YOU Imagine It
Easy

The Ultimate in Visualization Design



GOT1000 Screen Design Software

GT Works3

Screen development is reduced up to 70% compared to other conventional HMI environments.*

Screen data is portable and forward compatible.

Visualization has evolved to offer more than what you see is what you get.

* Compared to GT Designer 2 (based on our measurements)

7 points to easily
create new screens
and transfer them
to the GOT

Point 1 Work tree (P.8)

View the whole project, create a new screen, and add and delete screens with ease.

Property sheet

A selected object or graphic's settings are displayed as a tree view. Set colors, devices, etc., on the property sheet without opening a dialog box. When selecting the same objects or graphics, change color, character size, etc., all at the same time.

Temporary area

Reduce workspace clutter by moving objects off of the display area.

For more on GT Works3 features,
see the following pages:
• Fine images: Pages 6 to 7
• Simple operations: Pages 8 to 13
• Easy operations: Pages 14 to 18

Point 7 Simulator (P.13)

Preview operation without connecting to a GOT.

Point 6 Communication with the GOT (P.12)

Communication settings and drivers are automatically selected and downloaded to the GOT with the project data.

Point 2 Tool bar (P.8)

Vividly colored icons make distinguishing active functions from inactive ones easy.

Point 3 Library (P.9)

Parts are easy to select. High resolution graphics and parts are easy create and incorporate into projects.

Point 4 Dialog box (P.9)

User-friendly dialog boxes and object settings.

Point 5 Editor "screen design area" (P.10)

Navigate through multiple screens easily with a simple click of a tab. This is one of many convenient and efficient development functions that designers can take advantage of.



MELSOFT iQ Works improves design efficiency (P.17)

Batch parameter check and system labels of MELSOFT Navigator are supported.

Related tools (P.17 and 18)

GT Works3 comes with the Data Transfer Tool, GT Converter2, and other tools.



Your mind's the limit – choose among a wide variety of libraries, decorative characters, and fonts – you'll be pleased with the results

MELSOFT ●●●●
GT Works3



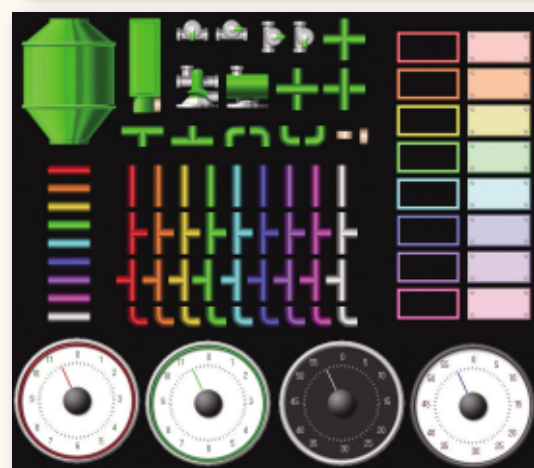
To create sophisticated screens quickly

Library

Many high-resolution parts are available



Import new parts and libraries as they become available



GT Works3 offers one of the most comprehensive graphical libraries on the market today.

Hundreds of popular graphical objects are available including a wide assortment of meters and piping.

High-resolution graphics can enhance other display objects including comment messages, numerical and ASCII input displays, and alarms.

To make screen titles attractive

Logo characters

Decoration!



New logo characters and new decorations. Outlines and neon make your characters more expressive. Characters up to 800 dots in size can be used.

Choose a font freely

Font variations

A wide variety of fonts!



The GOT1000 displays a stunning range of fonts.

- Standard fonts
→ Small characters are displayed clearly.
- Stroke fonts
→ The font size is specified in dots.
- Windows® fonts
→ Your favorite fonts can be used.

All fonts conform to Unicode 2.1, and about 40 languages can be displayed clearly. Thai characters are clearly displayed using stroke fonts.





Easily create stunning graphics and effortlessly perform operations and settings

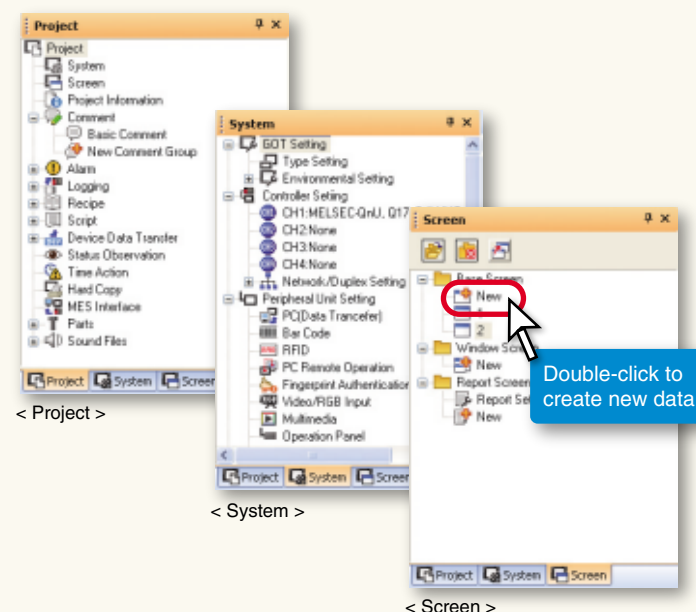
MELSOFT
GT Works3



With all these settings – which should I choose?

Point 1 Work tree

Setting items are classified so you can choose what you want more quickly

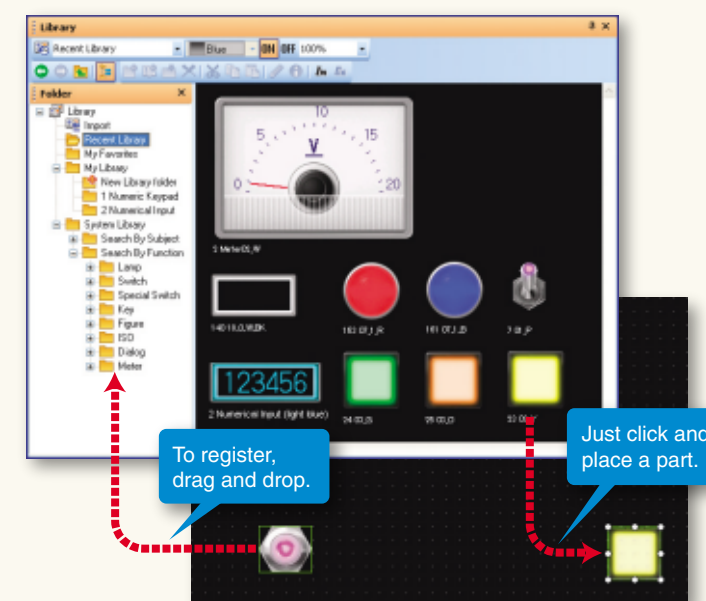


Setting items in a project are classified clearly into projects, systems, and screens. Everything is displayed so you can find what you want quickly. Create new screens or comments just by double-clicking on "New".

Lots of libraries -- but what are they for?

Point 3 Library

Cut library retrieval time!

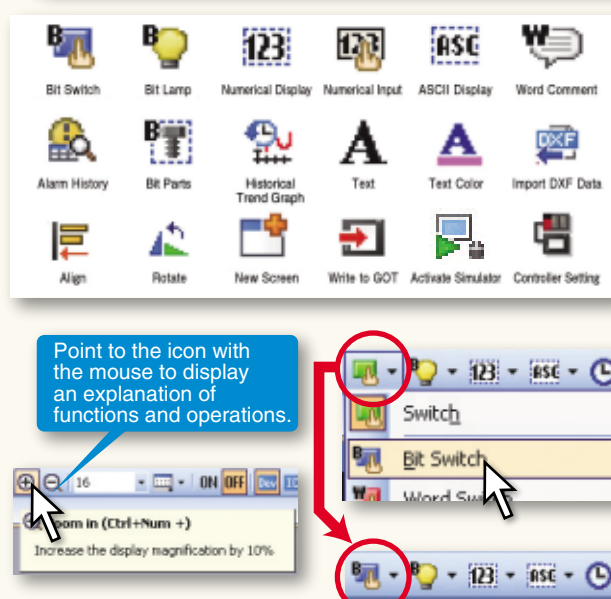


Finding objects in the parts library has never been easier. Simply choose a library by object type, function or recently used library list. To create a visual masterpiece – just choose parts from the library and place the objects on screen – what could be easier? To register a part, just select it, drag and drop it into the library.

What function best fits my application?

Point 2 Tool bar

New icons simplify function selection and improve efficiency

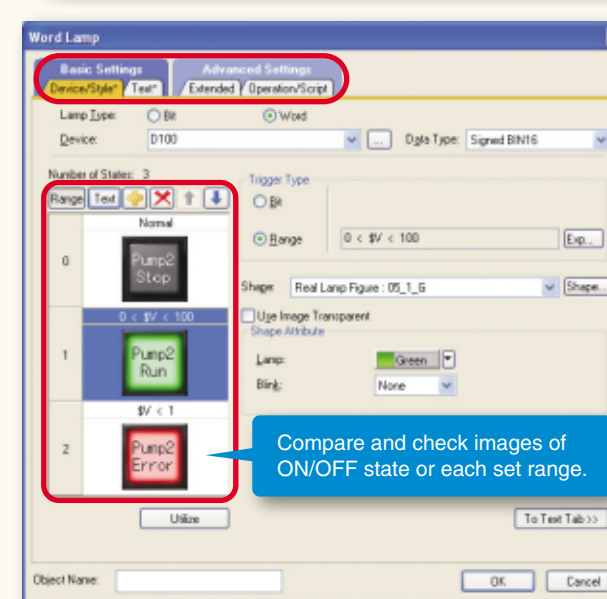


Simply designed full-color icons and easy explanations let anyone design screens easily. Previous selections are stored to increase design work efficiency. Say you select the bit switch from the menu to create a switch object -- the bit switch icon is immediately displayed so you can just click the icon to create another bit switch – no need to choose from a function menu.

But what items do I set?

Point 4 Dialog box

Terms and display items are improved to make settings easier!



Choose settings and operations using simple terms and display items. Object settings, ON/OFF conditions and other states can be modified and displayed directly from the configuration dialog box - saving valuable time and effort. Dialog tabs with stars "*" quickly show designers that object settings have been modified.





Various helpful and convenient functions. Use your imagination and creativity freely and quickly

MELSOFT
GT Works3



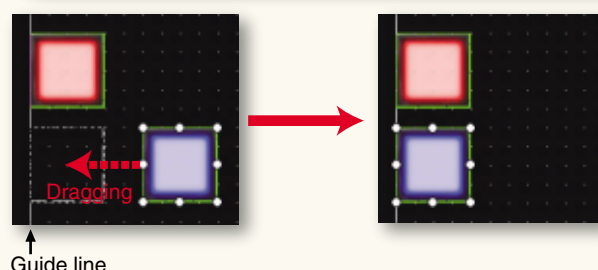
To design screens simply and efficiently!

Point 5 Editor

Lots of helpful and convenient functions

To place an object using only the mouse

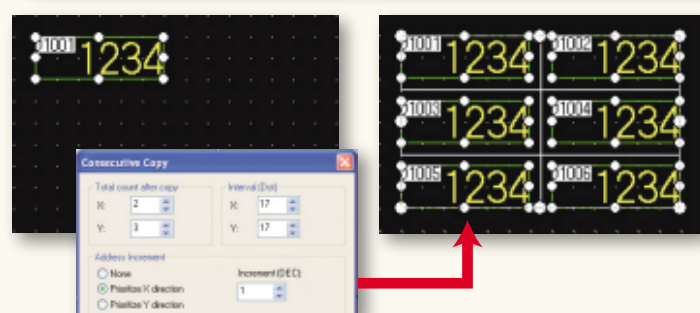
Correct positioning along a guide line



Drag the object to display the guide line -- Place the object using the mouse.

To lay out multiple figures and objects

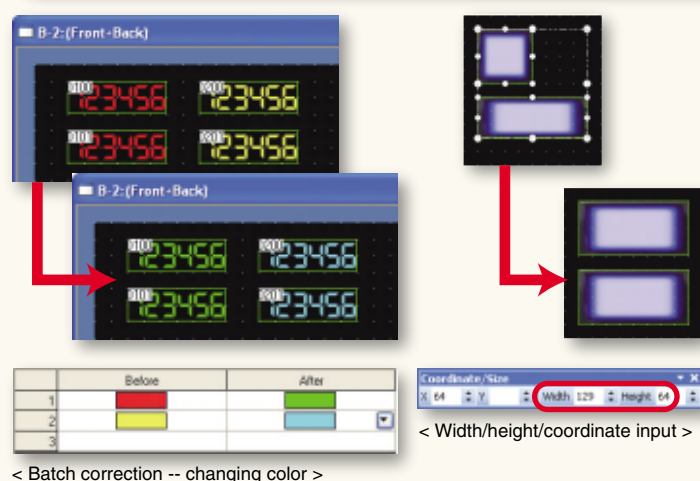
Use the continuous copy function to lay things out!



Copy the specified number of figures or objects all at once. When copying objects containing devices, assign device numbers by setting the increment.

To change settings for multiple figures or objects at the same time

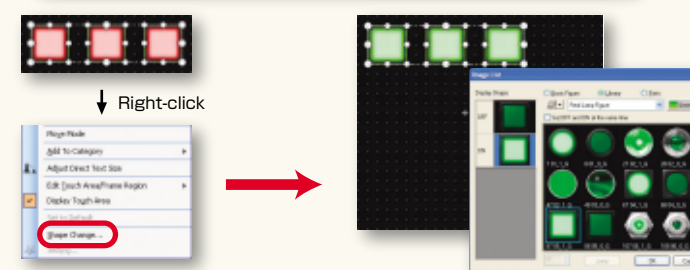
Easy correction with batch change and width/height/coordinate input functions!



Batch correction changes devices, colors, figures, and channel numbers all at once. With the width/height/coordinate input function, change the size of selected objects and rearrange them all at the same time by inputting width, height, and coordinates.

To effortlessly change figures

Change figures by just right-clicking

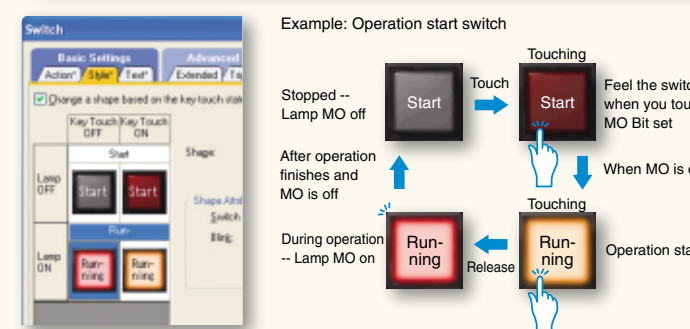


Change multiple figures easily with one operation while checking images of switches and lamps.

To see operating conditions better

4-state switch gives a more sensitive operation feel

NEW

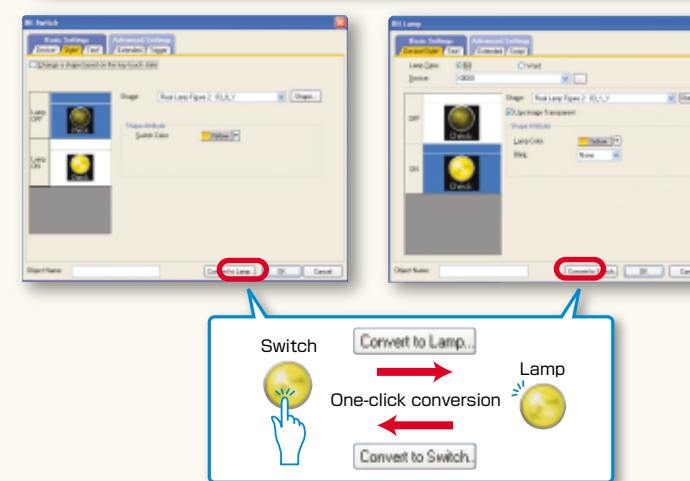


Display 4 states combining the touched state of touch switches and the device range of bit or word devices.

To efficiently change objects

A single click toggles a switch and lamp!

Available soon



Convert switch and lamp objects easily with just one click.



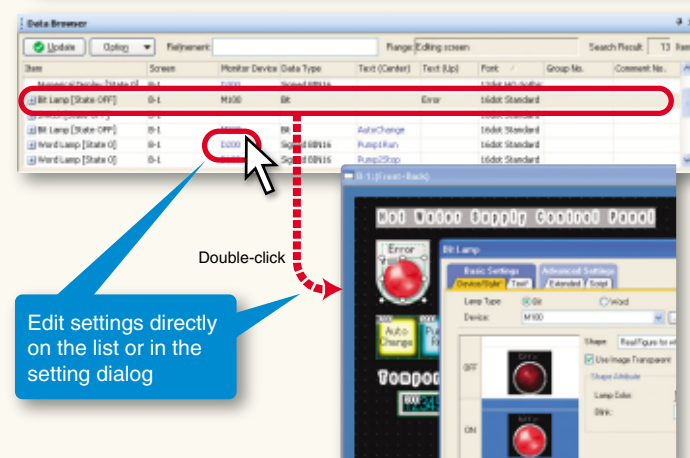
To draw graphics simply and efficiently!

Point 5 Editor

Many simple and convenient functions

To view several object settings at a glance

The data browser function makes settings easy to check and correct! **NEW**



Object and figure settings used in a project are listed.

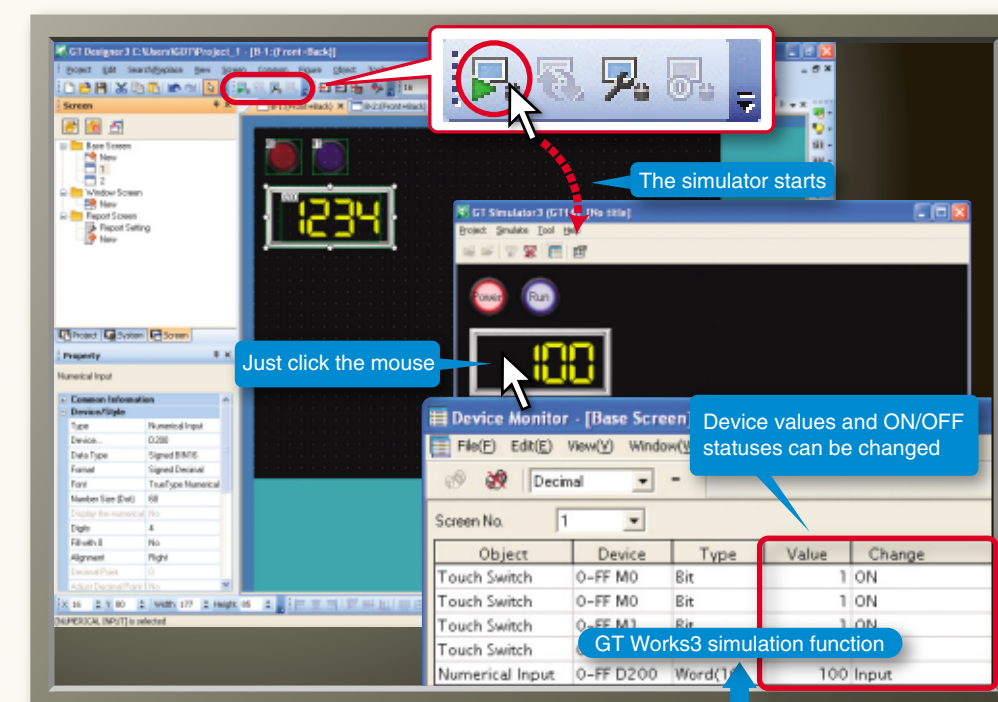
- Sort and search the list by device or keyword
- Change devices and character strings directly in the list
- Select or batch change multiple devices and character strings

Improve work efficiency when editing data on multiple screens or reusing existing data.

To check created data without the actual machine!

Point 7 Simulator

Simulation at a click!

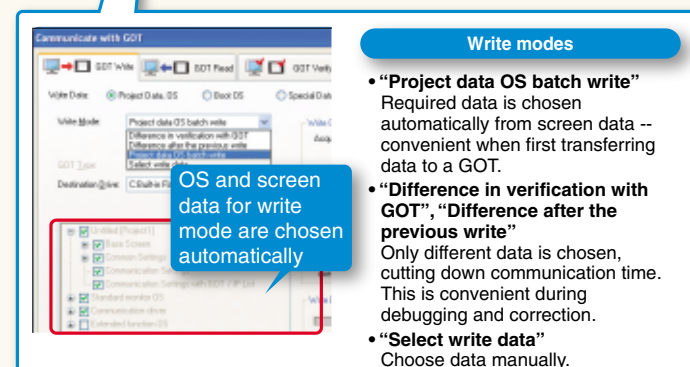
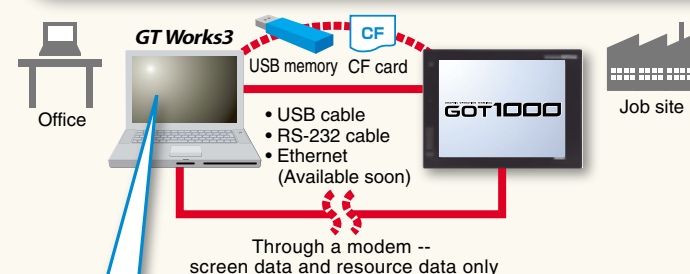


Communication/monitor

Which OS do I choose?

Point 6 Communication with the GOT

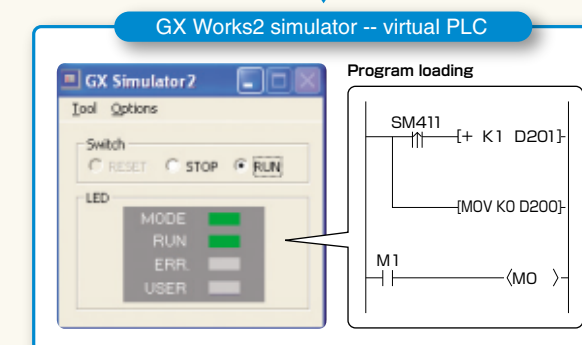
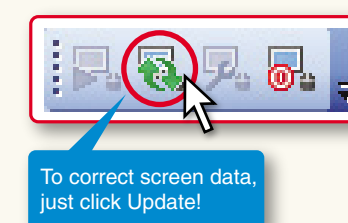
OS files are selected and automatically loaded along with projects!



The GOT automatically chooses the OS*1 based on screen data. OS and screen data are sent to the GOT simultaneously in one of four ways for transferring data to the GOT.

- 1) By cable*2
 - USB cable
 - RS-232 cable
 - Ethernet **Available soon**
- 2) By USB memory -- GT16 only
- 3) By CF card -- except GT10*3
- 4) Through a modem -- screen data and resource data only

*1: System files for the GOT are required to use the GOT.
 *2: Data transfer by Ethernet cable is supported on GT16 and GT15 only.
 GOT can be searched for on the Ethernet network if the IP address is unknown -- GT16 only.
 *3: For GT10 data can be transferred using the GT10-50FMB memory board for the GT105x and GT104x or the GT10-LDR for the GT1030 and GT1020.



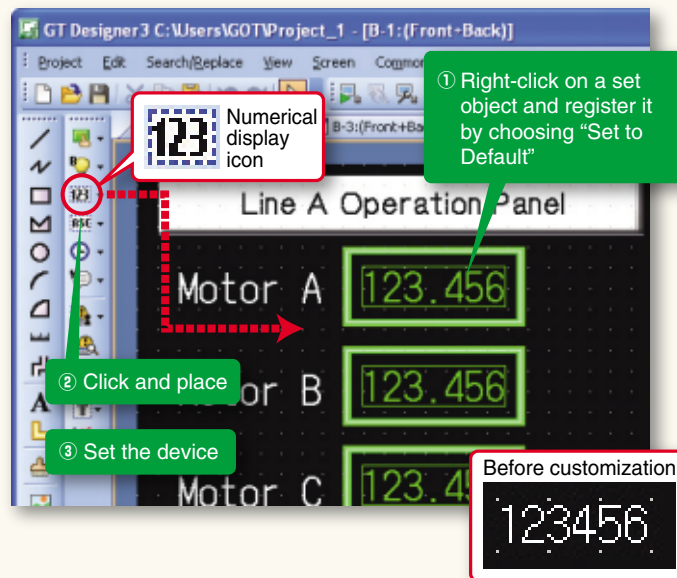
Use your PC to check screen data operation -- check alarms and monitor screen changes and devices. Debug data while correcting the screen.
 Start and update the simulator with one click and test devices easily. The simulator stores screen images in BMP and JPEG formats -- convenient for preparing operating manuals. (Except GT10)

* GX Works2 or GX Simulator is required separately.



Instantly suit your preferences

Change initial settings as you like

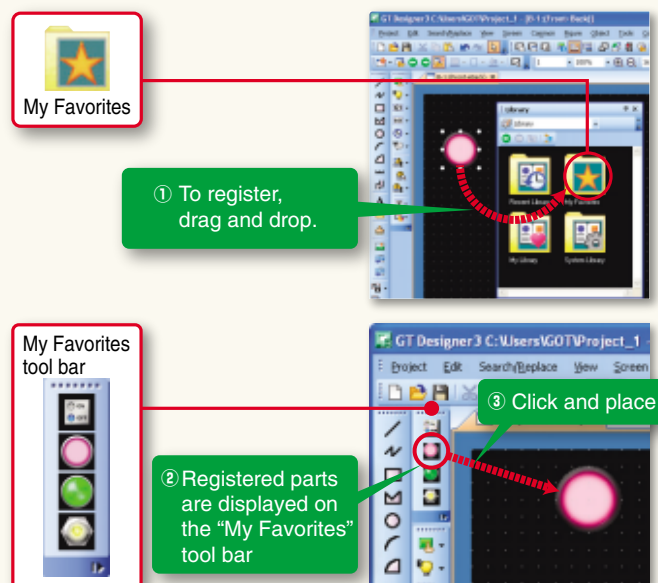


Initial settings for objects and figures can be tailored to suit the individual programmer or designer. Frequently-used objects can be pre-loaded and pre-configured to reduce the time to configure object settings.

Registered data is sharable with other projects and personal computers to design screens efficiently.

To reuse the same parts often

Select your favorite parts directly from the tool bar!

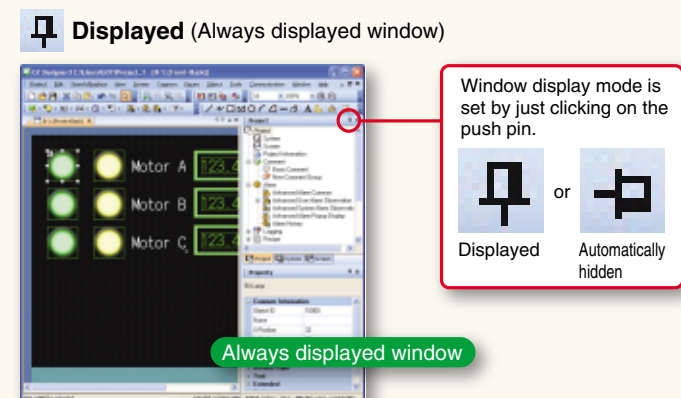


Objects on the "My Favorites" tool folder in the library are displayed on the "My Favorites" tool bar.

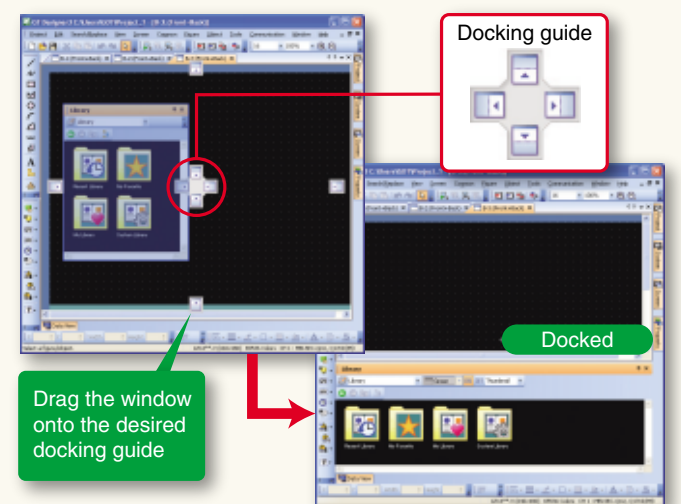
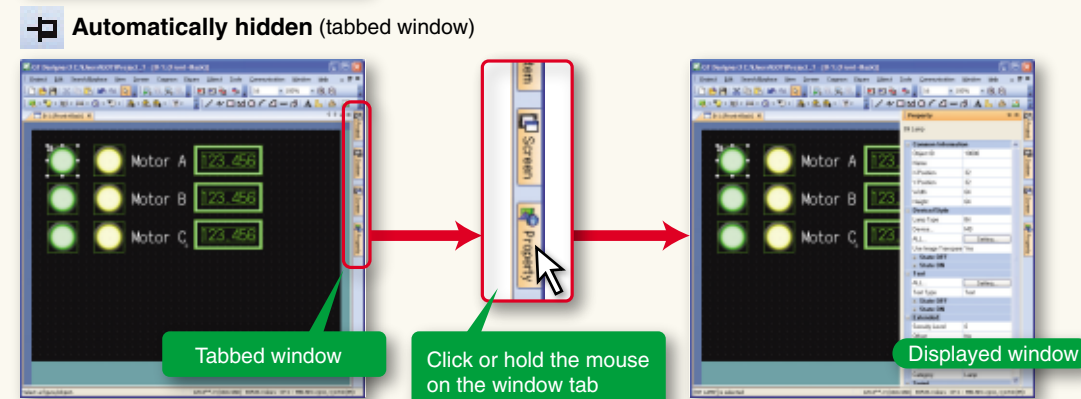
To add an object to "My Favorites", just drag-and-drop it into the folder. Place it by clicking on the tool bar.

To customize your screen design environment

Customize windows, icons, and tool bars



The window is automatically hidden using the push pin. When you need the window, put the mouse on the tab and the window is displayed. Make more room in the work area for smaller size PC screens.



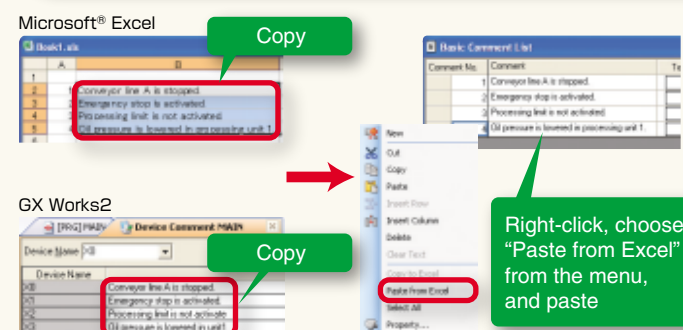
The window can be located anywhere above, below, to the left, or right based on the docking guide arrow.

Icons can be added or deleted; tool bars can be moved.



To enter comments and create recipe data quickly

Improve work efficiency working with other applications

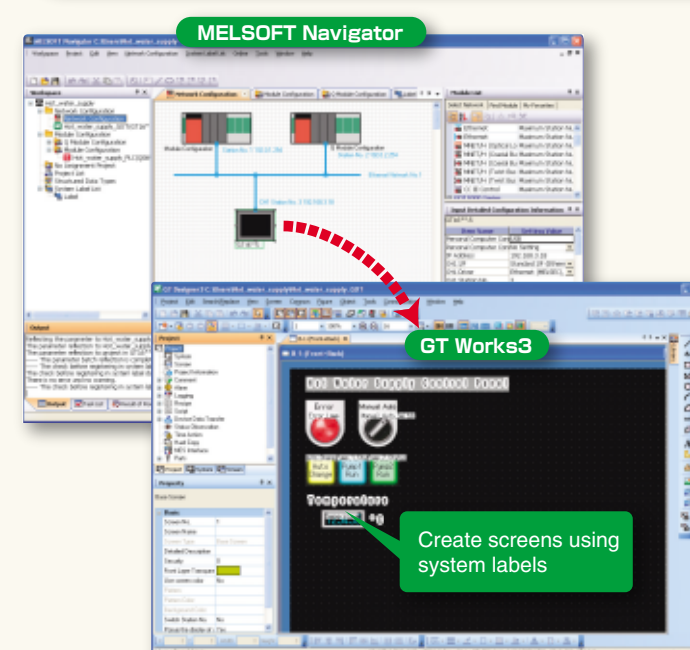


Select comments in Microsoft® Excel or GX Works2 and paste them into a comment list. Import and export are also available for the data created in CSV/Unicode text file format.

What can I do with MELSOFT iQ Works?

MELSOFT iQ Works

MELSOFT iQ Works lets you design systems more efficiently

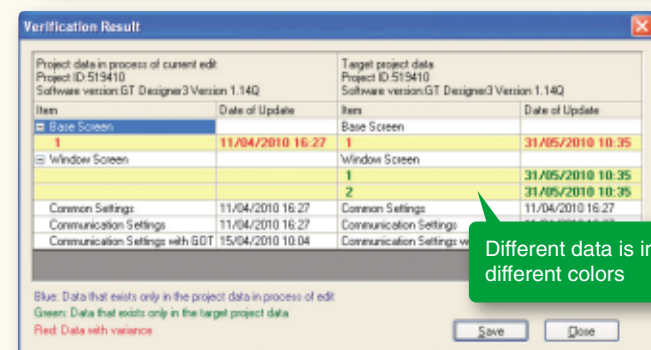


Configure a system combining GOT and PLCs and set up GOT I/F and communication drivers using MELSOFT Navigator, the system management software for the FA integrated engineering software package MELSOFT iQ Works.

System labels set by MELSOFT Navigator can be used in GT Works3.

How do these two pieces of data differ?

Verifying project data

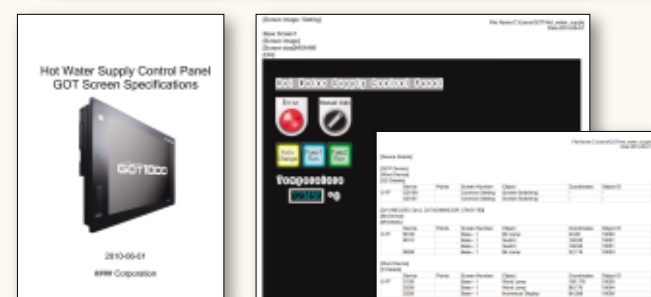


Verify project data.

- (1) Verifying project data between data on GOT and data on a personal computer.
- (2) Verifying project data being edited on a personal computer with other project data.

Preparing specifications

Printing to prepare specifications easily

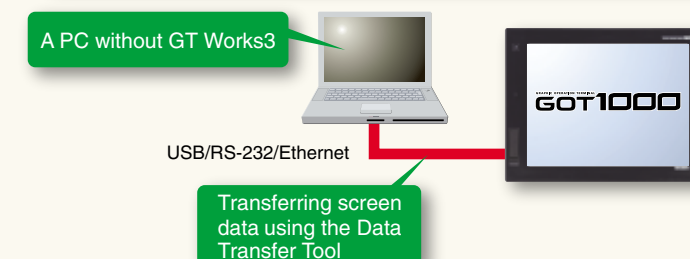


The cover, screen images, and the list of set devices can be printed or output to a file. Prepare specifications and operation manuals easily.

Do I need to install screen design software on my PC?

Data transfer tool

Data transfer does not require screen design software!



Use the Data Transfer Tool to transfer screen data from a PC without GT Works3.

- Applicable GOTs
GOT800, GOT900 and GOT1000
- Transferable data
Project data
Resource data (GOT1000 only)



Using existing data
to maintain usability
with a reliable screen design environment

MELSOFT
GT Works3



How do I edit GOT900 Series screen data?

GT Designer2 Classic

Data is edited using GT Designer2 Classic!

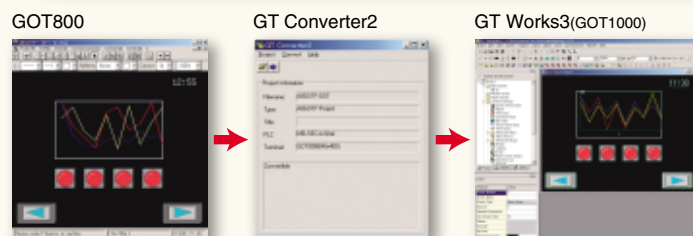


GOT900 Series screen data is edited using GT Designer2 Classic provided with GT Works3!

Can I use screen data for the GOT800 Series?

GT Converter2

Data can be converted into the GOT1000 format with GT Converter2



GT Converter2 converts project data created by previous screen design software applications to GT Works3-compatible data.

Supported screen design software

GOT800 Series screen design software (SW3NIW-A8GOTP)
Digital Electronics Corporation (Pro-face) screen design software (GP-PRO/PB III Series)

*: Some data and functions may not be usable.

MELSOFT GT Works3 (English version) operating environment

Item	Details																																			
PC	PC/AT compatible machine on which the following OS operates																																			
OS	<div><div><div>• Microsoft® Windows® 2000 Professional Service Pack 4 or later (English, Simplified Chinese, Traditional Chinese, Korean, German versions)*¹</div><div>• Microsoft® Windows® XP Professional Service Pack 2 or later (English, Simplified Chinese, Traditional Chinese, Korean, German versions)*¹⁺³⁺⁴</div><div>• Microsoft® Windows® XP Home Edition Service Pack 2 or later (English, Simplified Chinese, Traditional Chinese, Korean, German versions)*¹⁺³⁺⁴</div></div><div><div>• Microsoft® Windows Vista® Ultimate (English, Simplified Chinese, Traditional Chinese, Korean, German versions)*²⁺³⁺⁴</div><div>• Microsoft® Windows Vista® Enterprise (English, Simplified Chinese, Traditional Chinese, Korean, German versions)*²⁺³⁺⁴</div><div>• Microsoft® Windows Vista® Business (English, Simplified Chinese, Traditional Chinese, Korean, German versions)*²⁺³⁺⁴</div><div>• Microsoft® Windows Vista® Home Premium (English, Simplified Chinese, Traditional Chinese, Korean, German versions)*²⁺³⁺⁴</div><div>• Microsoft® Windows Vista® Home Basic (English, Simplified Chinese, Traditional Chinese, Korean, German versions)*²⁺³⁺⁴⁺⁵⁺¹⁰ NEW</div><div>• Microsoft® Windows® 7 Ultimate (English, Simplified Chinese, Traditional Chinese, Korean, German versions)*²⁺³⁺⁴⁺⁵⁺¹⁰ NEW</div><div>• Microsoft® Windows® 7 Enterprise (English, Simplified Chinese, Traditional Chinese, Korean, German versions)*²⁺³⁺⁴⁺⁵⁺¹⁰ NEW</div><div>• Microsoft® Windows® 7 Professional (English, Simplified Chinese, Traditional Chinese, Korean, German versions)*²⁺³⁺⁴⁺⁵⁺¹⁰ NEW</div><div>• Microsoft® Windows® 7 Home Premium (English, Simplified Chinese, Traditional Chinese, Korean, German versions)*²⁺³⁺⁴⁺¹⁰ NEW</div><div>• Microsoft® Windows® 7 Starter (English, Simplified Chinese, Traditional Chinese, Korean, German versions)*²⁺³⁺⁴ NEW</div></div></div>																																			
CPU	1 GHz or more recommended																																			
Required memory	512 MB or more recommended	1 GB or more recommended																																		
Display	Resolution XGA (1024 × 768 dots) or more																																			
Available hard disk space	To install GT Designer3: 1.6 GB or more recommended To run GT Designer3: 512 MB or more recommended																																			
Display colors	High Color (16 bits) or more																																			
Software	<div>Simulation on a PC requires the following software:</div> <div>• GX Works2 version 1.12N or later*⁶ or GX Simulator version 5.00A or later*⁶.</div> <div>*The applicable software version of GX Works2 or GX Simulator varies depending on the PLC CPU to be simulated.</div> <table><thead><tr><th>PLC CPU to be simulated</th><th>GX Simulator</th><th>GX Works2</th></tr></thead><tbody><tr><td>QCPU (A mode), ACPU, motion controller CPU (A series)</td><td>Version 5.00A or later</td><td>—</td></tr><tr><td>QnACPU</td><td rowspan="3">Version 5.40E or later</td><td rowspan="3">Version 1.24A or later</td></tr><tr><td>FX0 series, FX0N series, FX0S series, FX1 series, FX1N series, FX1NC series, FX1S series, FX2 series, FX2C series, FX2N series, FX2NC series</td></tr><tr><td>QCPU (Q mode) (excluding Q00J, Q00, and Q01 CPUs)</td></tr><tr><td>Q00JCPU, Q00CPU, Q01CPU</td><td>Version 6.00A or later</td><td rowspan="3">Version 1.12N or later</td></tr><tr><td>Q02PHCPU, Q06PHCPU</td><td>Version 7.20W or later</td></tr><tr><td>Q12PHCPU, Q25PHCPU</td><td>Version 6.10L or later</td></tr><tr><td>Q12PRHCPU, Q25PRHCPU</td><td>Version 6.20W or later</td><td rowspan="3">Version 1.24A or later</td></tr><tr><td>FX3uc Series</td><td>Version 7.08J or later</td></tr><tr><td>FX3u Series*⁷</td><td rowspan="2">Version 7.22Y or later</td></tr><tr><td>FX3a Series*⁷</td></tr><tr><td>Q00UJCPU, Q00UCPU, Q01UCPU, Q02UCPU, Q03UDCPU, Q04UDHCPU, Q06UDHCPU, Q10UDHCPU, Q13UDHCPU, Q20UDHCPU, Q26UDHCPU, Q03UDECPU, Q04UDEHCPU, Q06UDEHCPU, Q10UDEHCPU, Q13UDEHCPU, Q20UDEHCPU, Q26UDEHCPU</td><td>Version 7.23Z or later</td><td>Version 1.12N or later</td></tr><tr><td>LCPU</td><td rowspan="2">—</td><td>Version 1.24A or later</td></tr><tr><td>Q50UDEHCPU, Q100UDEHCPU</td><td>Version 1.30G or later</td></tr></tbody></table>		PLC CPU to be simulated	GX Simulator	GX Works2	QCPU (A mode), ACPU, motion controller CPU (A series)	Version 5.00A or later	—	QnACPU	Version 5.40E or later	Version 1.24A or later	FX0 series, FX0N series, FX0S series, FX1 series, FX1N series, FX1NC series, FX1S series, FX2 series, FX2C series, FX2N series, FX2NC series	QCPU (Q mode) (excluding Q00J, Q00, and Q01 CPUs)	Q00JCPU, Q00CPU, Q01CPU	Version 6.00A or later	Version 1.12N or later	Q02PHCPU, Q06PHCPU	Version 7.20W or later	Q12PHCPU, Q25PHCPU	Version 6.10L or later	Q12PRHCPU, Q25PRHCPU	Version 6.20W or later	Version 1.24A or later	FX3uc Series	Version 7.08J or later	FX3u Series* ⁷	Version 7.22Y or later	FX3a Series* ⁷	Q00UJCPU, Q00UCPU, Q01UCPU, Q02UCPU, Q03UDCPU, Q04UDHCPU, Q06UDHCPU, Q10UDHCPU, Q13UDHCPU, Q20UDHCPU, Q26UDHCPU, Q03UDECPU, Q04UDEHCPU, Q06UDEHCPU, Q10UDEHCPU, Q13UDEHCPU, Q20UDEHCPU, Q26UDEHCPU	Version 7.23Z or later	Version 1.12N or later	LCPU	—	Version 1.24A or later	Q50UDEHCPU, Q100UDEHCPU	Version 1.30G or later
PLC CPU to be simulated	GX Simulator	GX Works2																																		
QCPU (A mode), ACPU, motion controller CPU (A series)	Version 5.00A or later	—																																		
QnACPU	Version 5.40E or later	Version 1.24A or later																																		
FX0 series, FX0N series, FX0S series, FX1 series, FX1N series, FX1NC series, FX1S series, FX2 series, FX2C series, FX2N series, FX2NC series																																				
QCPU (Q mode) (excluding Q00J, Q00, and Q01 CPUs)																																				
Q00JCPU, Q00CPU, Q01CPU	Version 6.00A or later	Version 1.12N or later																																		
Q02PHCPU, Q06PHCPU	Version 7.20W or later																																			
Q12PHCPU, Q25PHCPU	Version 6.10L or later																																			
Q12PRHCPU, Q25PRHCPU	Version 6.20W or later	Version 1.24A or later																																		
FX3uc Series	Version 7.08J or later																																			
FX3u Series* ⁷	Version 7.22Y or later																																			
FX3a Series* ⁷																																				
Q00UJCPU, Q00UCPU, Q01UCPU, Q02UCPU, Q03UDCPU, Q04UDHCPU, Q06UDHCPU, Q10UDHCPU, Q13UDHCPU, Q20UDHCPU, Q26UDHCPU, Q03UDECPU, Q04UDEHCPU, Q06UDEHCPU, Q10UDEHCPU, Q13UDEHCPU, Q20UDEHCPU, Q26UDEHCPU	Version 7.23Z or later	Version 1.12N or later																																		
LCPU	—	Version 1.24A or later																																		
Q50UDEHCPU, Q100UDEHCPU		Version 1.30G or later																																		
Others	Mouse, keyboard, printer, CD-ROM drive, sound function (sound card)* ⁸ and loudspeakers* ⁸ used with the above OS																																			
Applicable GOT	GOT1000 Series* ⁹																																			

- *1: Installation requires administrator authority. Simulating the GOT-A900 requires administrator authority.
*2: Installation requires administrator authority. Using GT Works3 requires an account higher than the standard user.
To use GT Works3 with another application, if an administrator account is used to run the application then use an administrator account to run GT Works3.
Simulating the GOT-A900 requires administrator authority.
*3: The following functions are not supported:
Compatible Mode, Fast User Switching, Desktop Theme (Font) Change, Remote Desktop
*4: Only the 32-bit OS is applicable.
*5: Windows XP Mode is not supported.
*6: Use GT Simulator3, GX Developer, GX Simulator, and GX Works2 for the same language.
*7: The GOT-A900 cannot be simulated.
*8: May be required when the simulation function is used.
*9: The GT10 cannot use the simulation function.
*10: Windows Touch features are not supported.

Product configuration

Product	Model	Description
GT Works3	SW1DNC-GTWK3-E	Unbundled (English version)
Version1	SW1DNC-GTWK3-EA	Product with licensing (English version)

Related major manuals

* Manuals are supplied as PDFs with the software package in the CD-ROM. Printed manuals are also available.

Manual title	Manual No.
GT Designer3 Version1 Screen Design Manual (Fundamentals)	080866ENG
GT Designer3 Version1 Screen Design Manual (Functions) 1/2, 2/2	080867ENG
GOT1000 Series Connection Manual (Mitsubishi Products) for GT Works3	080868ENG
GOT1000 Series Connection Manual (Non-Mitsubishi Products 1) for GT Works3	080869ENG
GOT1000 Series Connection Manual (Non-Mitsubishi Products 2) for GT Works3	080870ENG
GOT1000 Series Connection Manual (Microcomputer, MODBUS Products, Peripherals) for GT Works3	080871ENG
GT Simulator3 Version1 Operating Manual for GT Works3	080861ENG
GT Converter2 Version3 Operating Manual for GT Works3	080862ENG

Mitsubishi Electric Corporation Nagoya Works and Himeji Works produce these products and certified for ISO14001 (standards for environmental management systems) and ISO9001 (standards for quality assurance management systems)



Mitsubishi iQ Platform-compatible Screen Design Software

For Graphic Operation Terminal GOT1000

MELSOFT GT Works3

Precautions for Choosing the Products

This catalog explains the typical features and functions of the GOT1000 series HMI and does not provide restrictions and other information on usage and module combinations.

When using the products, always read the user's manuals of the products.

Mitsubishi will not be held liable for damage caused by factors found not to be the cause of Mitsubishi; machine damage or lost profits caused by faults in the Mitsubishi products; damage, secondary damage, accident compensation caused by special factors unpredictable by Mitsubishi; damages to products other than Mitsubishi products; and to other duties.

For safe use

- To use the products given in this catalog properly, always read the related manuals before starting to use them.
- The products within this catalog have been manufactured as general-purpose parts for general industries and have not been designed or manufactured to be incorporated into any devices or systems used in purpose related to human life.
- Before using any product for special purposes such as nuclear power, electric power, aerospace, medicine or passenger movement vehicles, consult with Mitsubishi.
- The products within this catalog have been manufactured under strict quality control. However, when installing the product where major accidents or losses could occur if the product fails, install appropriate backup or failsafe functions in the system.

Country/Region	Sales office	Tel/Fax
USA	Mitsubishi Electric Automation Inc. 500 Corporate Woods Parkway, Vernon Hills, IL 60061, USA	Tel: +1-847-478-2100 Fax: +1-847-478-0327
Brazil	MELCO-TEC Rep. Com.e Assessoria Tecnica Ltda. Av. Paulista, 1439-CJ. 72 Cerqueira Cesar CEP 01311-200, Sao Paulo, SP, CEP: 01311-200, Brazil	Tel: +55-11-3146-2200 Fax: +55-11-3146-2217
Germany	Mitsubishi Electric Europe B.V. German Branch Gothaer Strasse 8, D-40880 Ratingen, Germany	Tel: +49-2102-486-0 Fax: +49-2102-486-1120
UK	Mitsubishi Electric Europe B.V. UK Branch Travellers Lane, Hatfield, Hertfordshire, AL10 8XB, UK.	Tel: +44-1707-276100 Fax: +44-1707-278992
Italy	Mitsubishi Electric Europe B.V. Italy Branch Viale Colleoni 7-20041 Agrate Brianza (Milano), Italy	Tel: +39-039-60531 Fax: +39-039-6053312
Spain	Mitsubishi Electric Europe B.V. Spanish Branch Ctra. de Rubí 76-80-AC.420, E-08190 Sant Cugat del Vallés (Barcelona), Spain	Tel: +34-93-565-3131 Fax: +34-93-589-1579
France	Mitsubishi Electric Europe B.V. French Branch 25, Boulevard des Bouvets, F-92741 Nanterre Cedex, France	Tel: +33-1-5568-5568 Fax: +33-1-5568-5757
Czech Republic	Mitsubishi Electric Europe B.V. Czech Branch Avenir Business Park, Radlická 714/113a CZ-158 00 Praha 5	Tel: +420-251-551-470 Fax: +420-251-551-471
Poland	Mitsubishi Electric Europe B.V. Polish Branch ul. Krakowska 50 32-083 Balice, Poland	Tel: +48-12-630-47-00 Fax: +48-12-630-47-01
Russia	Mitsubishi Electric Europe B.V. Moscow Office 52/3, Kosmodamianskaya nab., 115054, Moscow, Russia	Tel: +7-812-633-3497 Fax: +7-812-633-3499
South Africa	Circuit Breaker Industries Ltd. Private Bag 2016, ZA-1600 Isando, South Africa	Tel: +27-11-928-2000 Fax: +27-11-392-2354
China	Mitsubishi Electric Automation (China) Ltd. 17/F, ChuangXing Financial Center No.288 West Nanjing Road, Shanghai 200003	Tel: +86-21-2322-3030 Fax: +86-21-2322-3000
Taiwan	Setsuyo Enterprise Co., Ltd. 6F, No.105 Wu-Kung 3rd Rd, Wu-Ku Hsiang, Taipei Hsien 248, Taiwan	Tel: +886-2-2299-2499 Fax: +886-2-2299-2509
Korea	Mitsubishi Electric Automation Korea Co., Ltd. 1480-6, Gayang-dong, Gangseo-ku, Seoul 157-200, Korea	Tel: +82-2-3660-9552 Fax: +82-2-3664-8372
Singapore	Mitsubishi Electric Asia Pte, Ltd. 307 Alexandra Road #05-01/02, Mitsubishi Electric Building Singapore 159943	Tel: +65-6470-2460 Fax: +65-6476-7439
Thailand	Mitsubishi Electric Automation (Thailand) Co., Ltd. Bang-Chan Industrial Estate No.111 Soi Serithai 54, T.Kannayao, A.Kannayao, Bangkok 10230 Thailand	Tel: +66-2-517-1326 Fax: +66-2-517-1328
Indonesia	P.T. Autoteknindo Sumber Makmur Muara Karang Selatan, Block A / Utara No.1 Kav. No.11, Kawasan Industri Pergudangan, Jakarta- Utara 14440, P.O.Box 5045 Jakarta 11050-Indonesia	Tel: +62-21-663-0833 Fax: +62-21-663-0832
India	Messung Systems Pvt., Ltd. Electronic Sadan NO: III Unit No.15, M.I.D.C. Bhosari, Pune-411026, India	Tel: +91-20-2712-3130 Fax: +91-20-2712-8108
Australia	Mitsubishi Electric Australia Pty. Ltd. 348 Victoria Road, Rydalmere, N.S.W. 2116, Australia	Tel: +61-2-9684-7777 Fax: +61-2-9684-7245



MITSUBISHI ELECTRIC CORPORATION

HEAD OFFICE: TOKYO BUILDING, 2-7-3, MARUNOUCHI, CHIYODA-KU, TOKYO 100-8310, JAPAN
NAGOYA WORKS: 1-14, YADA-MINAMI 5, HIGASHI-KU, NAGOYA, JAPAN

When exported from Japan, this manual does not require application to the Ministry of International Trade and Industry for service transaction permission.