



Robin SmartView SIP

February 2013
V3.0

About Robin Telecom Development

- Established in 2009, based out of Heerhugowaard/Netherlands
- Manufacturer of high-end analog- and SIP video door intercoms, indoor/outdoor IP Surveillance Camera's, and Hosted Video Recording Service
- In-house hardware/software development and production facility
- Product portfolio concentrates around integration of Video Surveillance, Access Control and IP Telephony.



Contents

- Robin SmartView SIP video door intercom
- Features
- Deployment Options
- Datasheet
- Documentation
- Support
- Where to buy

Robin SmartView SIP video door intercom

Flush mount



C02050



C02052



C02054



C02056

Surface mount



C02051



C02053



C02055



C02057

Robin SmartView SIP video door intercom

Flush mount box



C01110



C01111



C01112



C01113

Surface mount box



C01100



C01101



C01102



C01103

Features (Release 3.x)

- 5 Megapixel video sensor (CMOS 1/2.5")
- HD Video (720p)
- Resolution: max 640 x 480 for video calls, max HD (720p) to VMS or WebGUI (MJPEG/RTSP)
- H.263, H.263+, H.264 video codec
- WideAngle lens, 130° viewing angle
- Auto White Balance
- Auto Gain Control
- Digital PTZ (x2), Motion Triggering
- Sharpening filter
- Interpolation filter
- MJPEG/HTTP or H264/RTSP to 3rd party VMS, or Hosted Video Recording service
- 802.1x authentication

Features

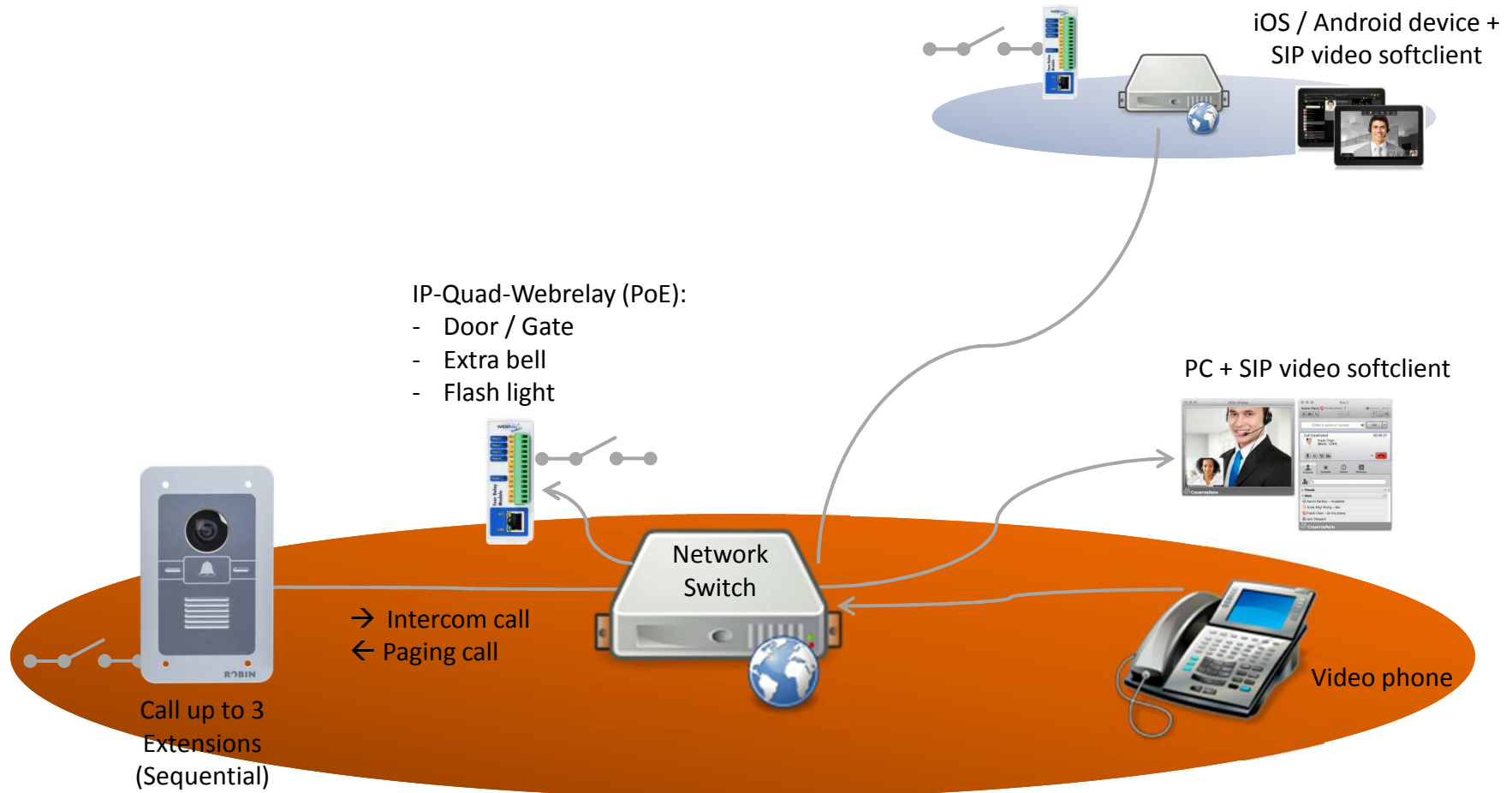
- Aesthetic design in anodized aluminium casing
- Dome: hardened optical glass with photochromic properties
- Piezo electric call buttons
- 1 x build-in door-opener relay (max 48V/60W)
- Interface to (multiple) external IP-Quad-Webrelay(s) (max 28V/1A)
- Registration on (Hosted) IP PBX, or Peer-to-Peer to max 3 SIP phones (subsequent ringing)
- Up to 3 pre-configured phone numbers per call button
- Time Based Routing (Time-of-Day, Day-of-Week)
- Arm/disarm Auto Answer for incoming calls (Paging), configurable auto answer delay
- Echo Cancellation, Denoise

Features

- HTTP API for remote control of the SmartView SIP
- Configurable Events / Action matrix
- Events:
 - Incoming/outgoing call
 - Ringing
 - Receipt of DTMF digits
 - Receipt of HTTP API command
 - Motion detection
 - Microphone detected audio
- Actions:
 - Setup outgoing call
 - Operate build-in relay
 - Operate external IP-Quad-Webrelay
 - Beep
 - Record audio & video, storage in www.recording4all.com
 - TCP trigger

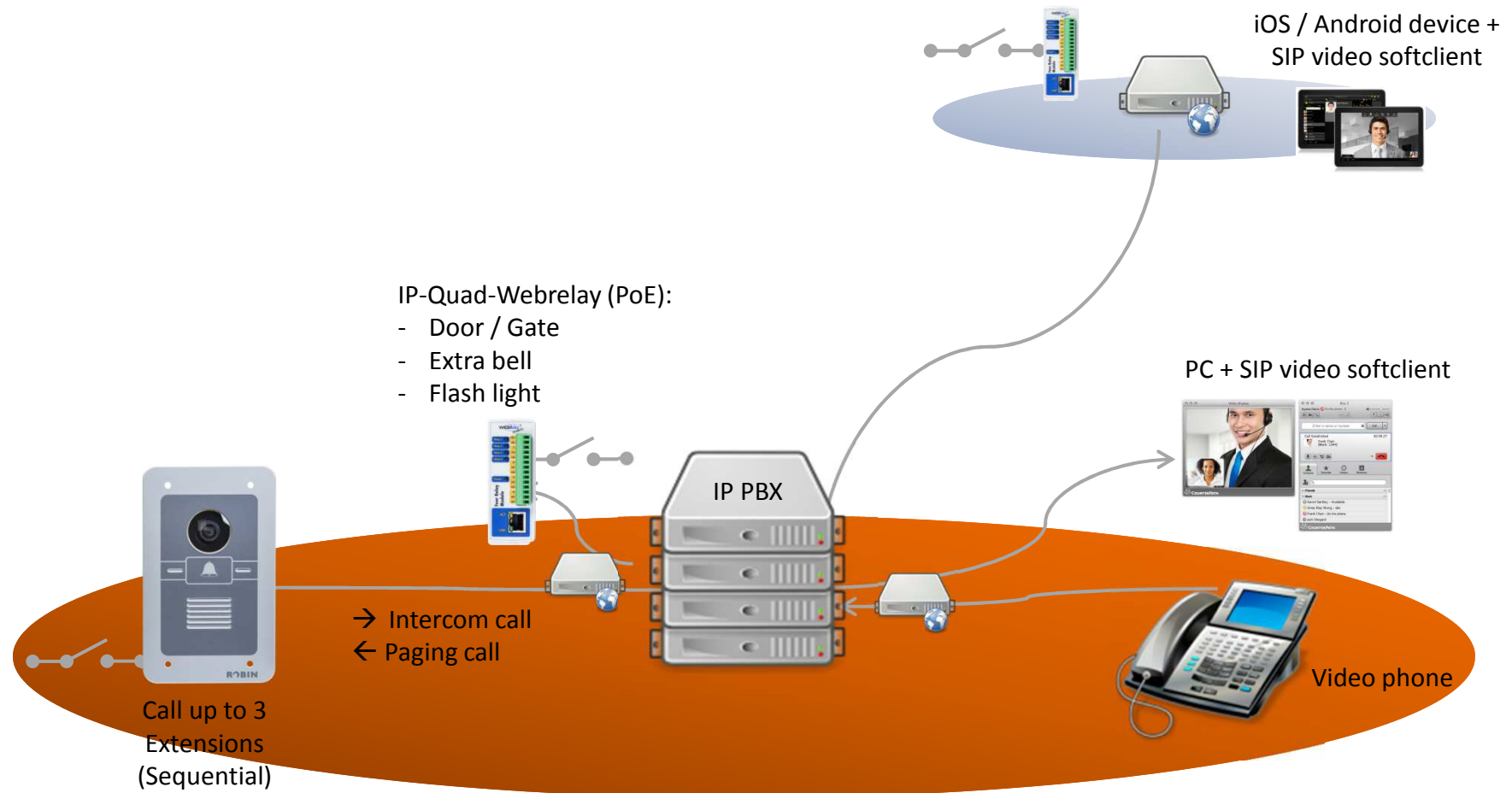
Deployment Options - video telephony

Peer-to-Peer



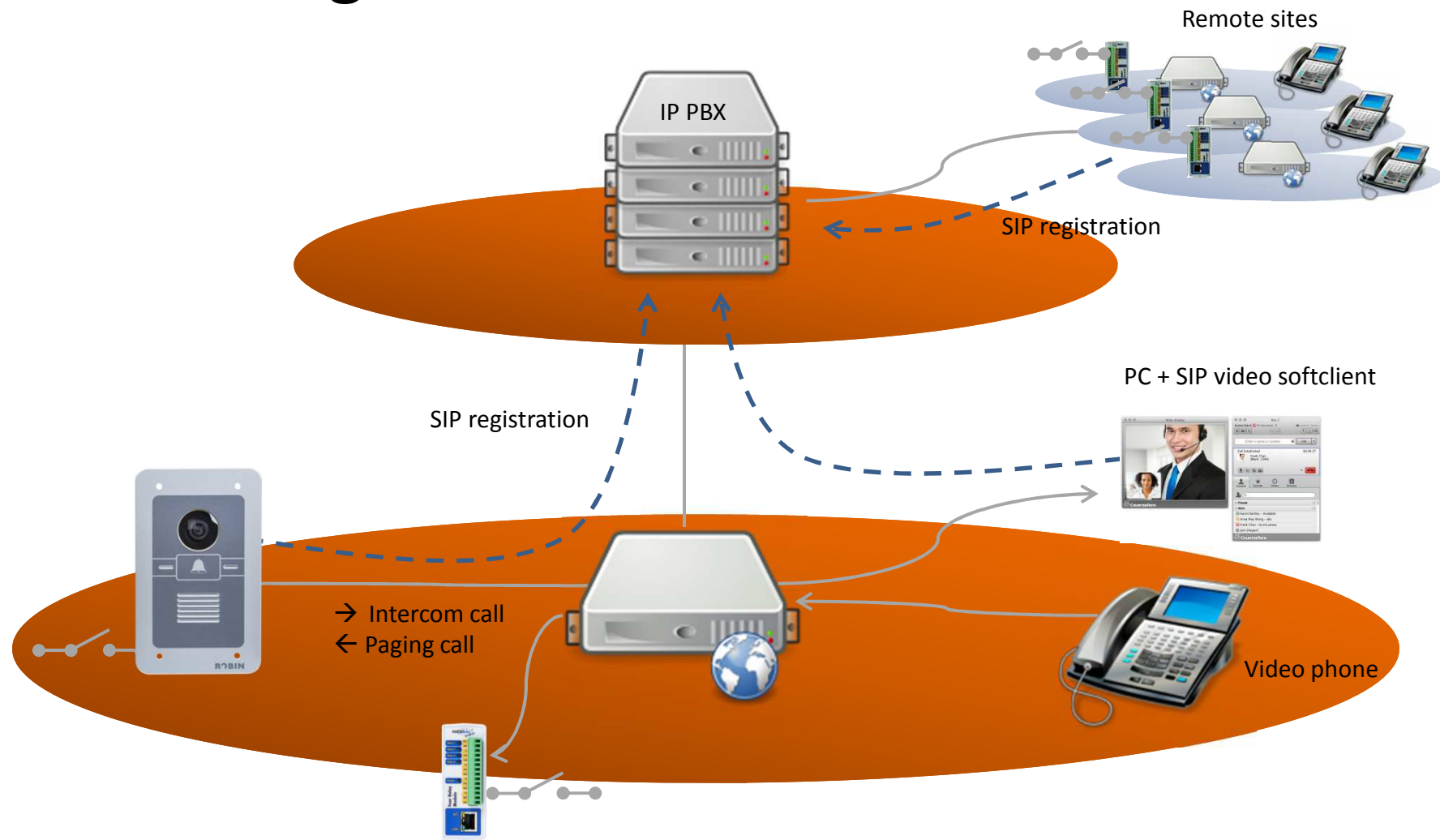
Deployment Options - video telephony

Registered on IP PBX

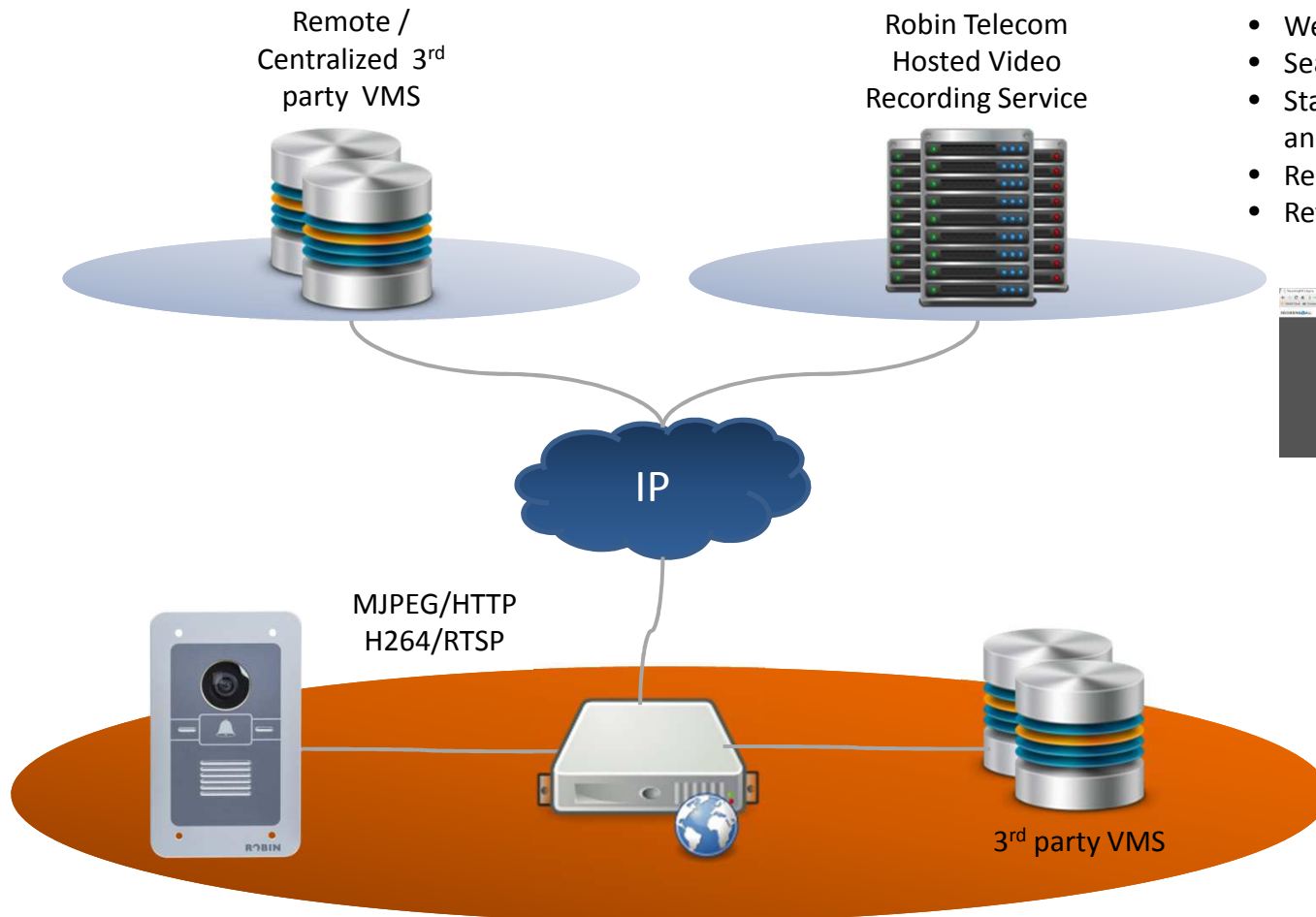


Deployment Options - video telephony

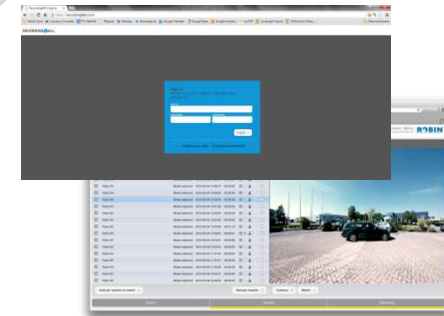
Registered on Hosted IP PBX



Deployment Options – integration to VMS



- Webportal, HTTPS login
- Search & Replay of recorded Video
- Start recording on incoming calls, and/or on motion detection
- Redundant storage
- Retention period: 28 days



Audio/Video Streaming to local VMS, **or** centralized VMS, **or** RTD Hosted Video Recording

Datasheet

Casing	Anodized aluminium (2.5mm)
Surface mount box	Anodized aluminium (2.5mm)
Call buttons	Piezo electric, 1, 2, 4 or 6 per intercom
Nameplates	White, resopal (2, 4 and 6 button models)
Protocols	DHCP, DNS, HTTP, NTP, RTP, RTSP, SIP, TCP, UDP, 802.1x
IP PBX connectivity	Refer to Compatibility Sheet
Connector	8 pole connector (IP , Relay)
Ingress Protection	IP53 (incl surface- or flush-mount box)
Operating conditions	-30° C ... +60° C
Dimensions	110 x 180/210/257/304 (resp 1, 2, 4, 6 buttons)
Weight	Flush-mount: 500/550/600/650 grams Surface mount: 1.2/1.4/1.6/1.8 kg
Power	IEEE 802.3af

Documentation

- Documentation available in Dutch and English language.
- SmartView shipped with USB stick that includes Documentation and Discovery Tool.
- All manuals are available for download via Support website:
<http://support.robin.nl> (knowledge base)
 - Installation and Operations Manual
 - Release Notes
 - Compatibility Sheet
 - HTTP API
 - Tech docs / How-To docs
 - Discovery Tool

Support

- Warranty: 12 months carry-in
- Return Merchandise Authorization (RMA) procedure:
 - Contact RTD Support desk
 - Minimum info required: part-number, serial-number, software release, problem description.
 - Support desk assigns RMA#
 - Do not return equipment prior to consulting our Support desk, or without RMA#.
- Support desk:
 - Monday to Friday, 08:30 – 17:00 CET
 - Minimum info required: part-number, serial-number, software release, problem description.
 - (E) support@robin.nl
 - (W) <http://support.robin.nl>
 - (T) +31 72 534 64 26

Where to buy

- We do not sell our products to end users, only through indirect sales channels.
- Indirect Channel Partners are listed on our website:
www.robin.nl/nl/partners/
- No Reseller assigned in your country, or interested to become a Reseller ?
 - Contact us at info@robin.nl or +31 72 534 64 26

Robin Telecom Development

Flemingstraat 50
1704 SL Heerhugowaard
(T) +31 72 534 64 26
(F) +31 72 534 64 03
www.robin.nl
info@robin.nl

KVK: 37 14 89 38
BTW: NL820481257B01

