

KVM serves for optimised resources and improved collaboration in control rooms



People in all kinds of places, sectors and industries rely on other people for guidance, safety and control. The need for safety and security is constantly growing. Control rooms exist all over the world and employ thousands of people who deserve the best ergonomic environment to be able to make fast and right decisions.

Who can people rely on?

The Dutch company Brand located in Deventer provides long lasting expertise in building and equipping control rooms. Brand specialises in turnkey solutions for control rooms worldwide. They design, discuss, adapt, optimise and supervise their customers' projects from A to Z. Brand started more than 75 years ago with just a small glass cabinet. Today, Herman Brand runs the business and has already been working for the company for more than 40 years. In 2010, driven by the growth of the recent year, Brand was split in two: Brand interiors (including interior design, office

and commercial projects) and Brand control rooms (responsible for the design of reporting and control rooms).

Control room solutions for all industries

From smallest installations to global organisations - Brand deals with widely varying industries. High tech control rooms are applied in:

- Government and Ministry
- Transport and port industries
- Chemical industry
- Broadcast
- Communications
- Energy supply
- Environmental services
- Refineries et cetra

What makes Brand control rooms special?

High tech control rooms demand special technical equipment such as the unique products from Brand. For every project, an experienced team and the customer work closely together. Brand delivers the comprehensive all-inclusive package from floor to ceiling with cables and electricity included. The Dutch manufacturer is unique in exercising total control over the design, production and completion of the custom furniture. Brand's desks, lighting, sun screens and video walls can be operated via state-of-the-art electronics such as tablets, touch panels and kinetic switching systems. Since every concept is different, Brand produces all equipment in-house:

Overview

Customer

Brand Control Rooms specialise in turnkey solutions for control rooms worldwide. They design, discuss, adapt, optimise and supervise their customers' projects from A to Z. With one result: handing a worry-free and dependable control room over to the customer.

Partner

Koning & Hartman provide solutions for all sectors of telecom, industry and infrastructure. Their employees embrace latest technologies on a daily basis and collaborate with leading technology partners and clients.

Challenge

The increasing complexity of monitoring the large diversity of control centres

- The growing complexity of the control network infrastructure
- The increasing standards of availability and requirements

Products

- G&D KVM extenders (DL-Vision, DVIVision, FIBREVision, CATVision) for digital or analogue video signals and the use of different infrastructural cables
- G&D KVM switches to operate multiple computers over one console (DL-MUX, DVIMUX)
- G&D KVM matrix switches for cross operation of multiple servers by multiple controllers in a 1:1 connection (CATCenter, DVIVision)

Solution

Removing computers from the control room into a dedicated server room and using various KVM applications to make them again available to users.

Benefits

KVM creates a work environment in which employees work efficiently and focused, manage crisis, make the right decisions and fix bugs as quickly as possible.



▲ Brand interiors and Brand control rooms in Deventer, NL



How does KVM work in detail?

Using KVM extenders is like “stretching” the keyboard, video and mouse cables over a long distance. A system consists of a sender placed at the computer and a receiver fixed under the controller’s desk. Both devices are connected over infrastructural cables (CAT or optical fibres). And one of the main advantages:

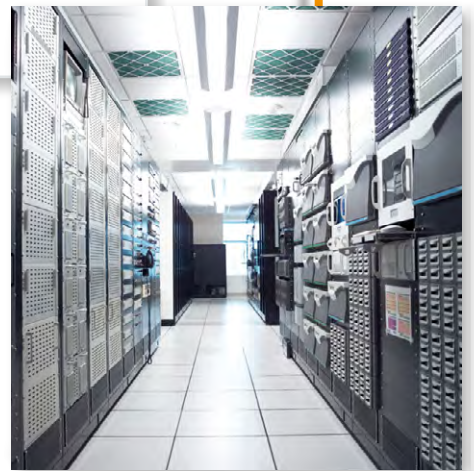
▲ *Shell Singapur control room , designed and implemented by Brand control rooms*

- ▶ electrically height-adjustable operator desks as well as sit/stand tables with adjustable monitor support system
- ▶ technical base units with monitor support systems (electrically adjustable)
- ▶ system acoustic ceiling and wall units
- ▶ special task lighting and balanced LED lighting
- ▶ raised floor and composite computer floors
- ▶ various electrical/cable management
- ▶ integrated air-conditioning system
- ▶ video conference furniture for remote investigations in prisons
- ▶ and many more innovative products

Employees need the best ergonomic environment to support them in their important tasks that require both rapid response times and concentration.

To work more efficiently, controllers and computers need to be separated. However, all controllers still need to be able to access any computers inside the control room.

To fulfil this task, Brand works closely together with the Dutch system integrator Koning & Hartman. Koning & Hartman provide solutions for all sectors of telecom, industry and infrastructure. Peter Janssen, Sales Consultant at K&H, works as Brand’s technical advisor. The system integrator implements products from the German manufacturer Guntermann & Drunck (G&D).



K&H implements G&D at Brand

Especially mission-critical applications like control rooms require constant monitoring.

Various KVM systems help removing the computer technology from the control room into their own space. KVM brings controller and computer back together again. Now each computer is just a mouse click away. This flexibility creates a work environment in which employees work efficiently and focused, manage crisis, make the right decisions and fix bugs as quickly as possible.



◀ John Blom, Intern Project Leader at Brand

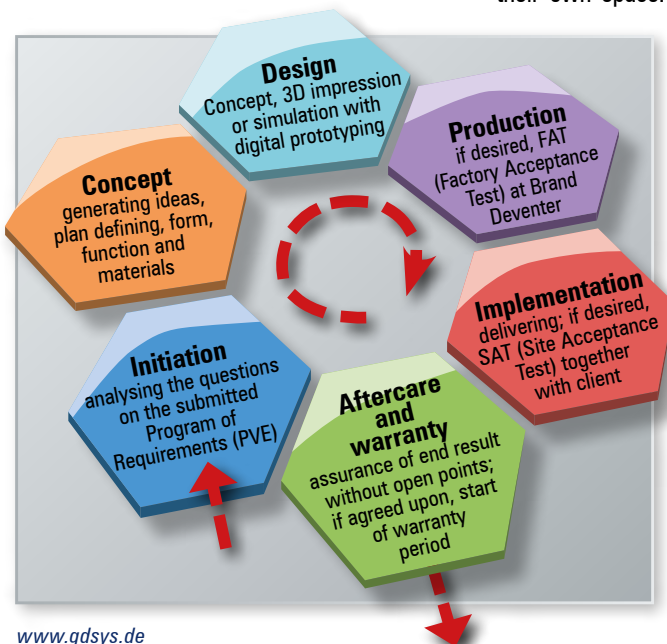
„We have chosen to use the products of G&D because their high

quality standards matches with our requirements for 24/7 products.“

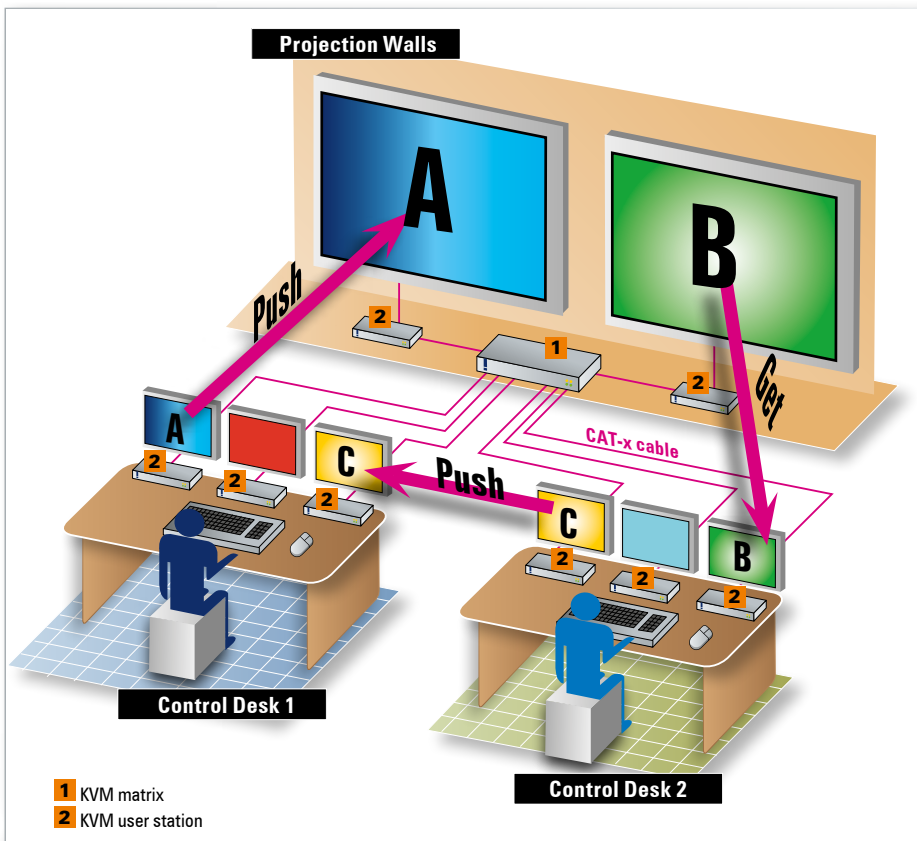
„Together with G&D, Brand brings their high quality designed furniture for control rooms to the next level of controlroom automation.“



Peter Janssen, Sales Consultant at Koning & Hartman ▶



◀ „Technology User Needs Assessment“ methodology: The method enables project managers in a structured model attention to achieving the intended functionality, comfort and health.



Interaction of controllers using a KVM system

the plug-and-play solution doesn't require any additional software.

KVM matrix switches even go one step further since they route all KVM signals from multiple sources to multiple workstations (Push-Get-Function).

The system also enables crossed access to other computers. Thus, users can operate a computer from multiple consoles. A KVM matrix even allows to "move" the screen content from one console to another, or even to large screens. The system also enables users to get the keyboard/video/mouse functions from projection walls or other consoles to their console.

Monitoring and SNMP functions are also part of many G&D products and help monitoring

- the system status of G&D products
- the system statuses of connected peripherals

The administrator can react to critical conditions (for example exceeding temperatures, miscommunications with the keyboard interface, or problems with the redundant system) before they lead to failures. Large screens can be integrated into the control room or control stations so that critical situations can be easily monitored.

This solution does not only reduce the amount of computers but also improves the

communication, flexibility and speed within the team since the employees are now able to share tasks.

Challenges

When equipping control rooms, Brand and Koning & Hartman deal with all kinds of customers, branches and requirements. They constantly need to adapt to new and further developments like:

- settling of centralised computer base-ment while guaranteeing full access for maintenance
- combining different systems even over different platforms
- ensuring all staff members always have access to all computers from all desks
- managing increasing complexity of monitoring the large diversity in control centres
- adapting to the growing complexity of the control network infrastructure
- improving the service level while reducing operational costs
- ensuring intuitive operation because staff needs to concentrate on monitoring processes instead of IT operation
- adapting to the increasing standards of availability and requirements

Future demands and roadmap

Protecting the environment is an integral part of Brand's company policy. From design and materials, through energy and water consumption, recycling and packaging to logistics - at all stages, Brand consider the possible consequences for the environment and adapt their processes and products accordingly. Brand have a sustainable vision for the future. That's why they need partners like Koning & Hartman and Guntermann & Drunck who share these values.

Author & Illustrator: Annette Haebel/G&D

Photos: Roland Ollek/G&D; Brand Control Rooms; Julie Abshire

G&D successfully deployed at:

Brand control rooms
emergency and control rooms

Brand control rooms
Duurstedeweg 13
7418 CK Deventer 7400
Phone +31 (0) 570 63 70 55
Fax +31 (0) 570 63 13 44
E-Mail info@branddeventer.nl
Web www.brandcontrolrooms.com

Attending G&D Partner:

Koning & Hartman

Koning & Hartman B.V.
Haarlerbergweg 21e-23e
1101 CH Amsterdam
Phone +31 (0) 20 587 76 00
Fax +31 (0) 20 587 76 05
E-Mail info@koningenhartman.com
Web www.koningenhartman.com

KVM Solutions by:

Guntermann & Drunck GmbH

Guntermann & Drunck GmbH
Dortmunder Str. 4a
57234 Wilnsdorf
Phone +49 (0) 27 39 / 89 01 - 333
Fax +49 (0) 27 39 / 89 01 - 120
E-Mail sales@gdsys.de
Web www.gdsys.de